

# LAKEVILLE

CITY LIVING BY THE LAKE

# a **New** side *of* life




**LakeVille** – living by the **lake**, living by the **city**. “Ville” is the French word for “City”, and this is the place that melds the finest elements of both domains for your everyday enjoyment.




# AS JURONG LAKE DISTRICT TRANSFORMS,



Lakeside & Chinese Garden MRT  
approx. 5 mins' walk 




Chinese & Japanese Gardens  
approx. 2 mins' drive 



Future Lakeside Village  
approx. 5 mins' drive 



NTU, NUS, Polytechnics  
approx. 7 - 11 mins' drive 

## LAKEVILLE



# SO DOES YOUR LIFE.

Experience all the possibilities of transformation, and let them enrich your life. The Lakeside precinct, together with the Jurong Gateway precinct, form the 360ha **Jurong Lake District**. Get ready to grasp all the new opportunities at the **Central Business District of the West**, and enjoy your access to S'pore's largest regional centre.



Canadian International School

 approx. 3 mins' walk



Westgate

 approx. 3 mins' drive / 1 MRT stop away



JEM

 approx. 3 mins' drive / 1 MRT stop away



Central Business District / Orchard

 approx. 18 mins' drive

# A SPECIAL PLACE TO FIND ALL WE SEEK.

---

Discover **LakeVille**, the residence by the lake that gives you the best of both worlds. It draws out the best of city living at Jurong Gateway and it draws you into the embrace of nature by the lake. Welcome home to where you've always belonged.



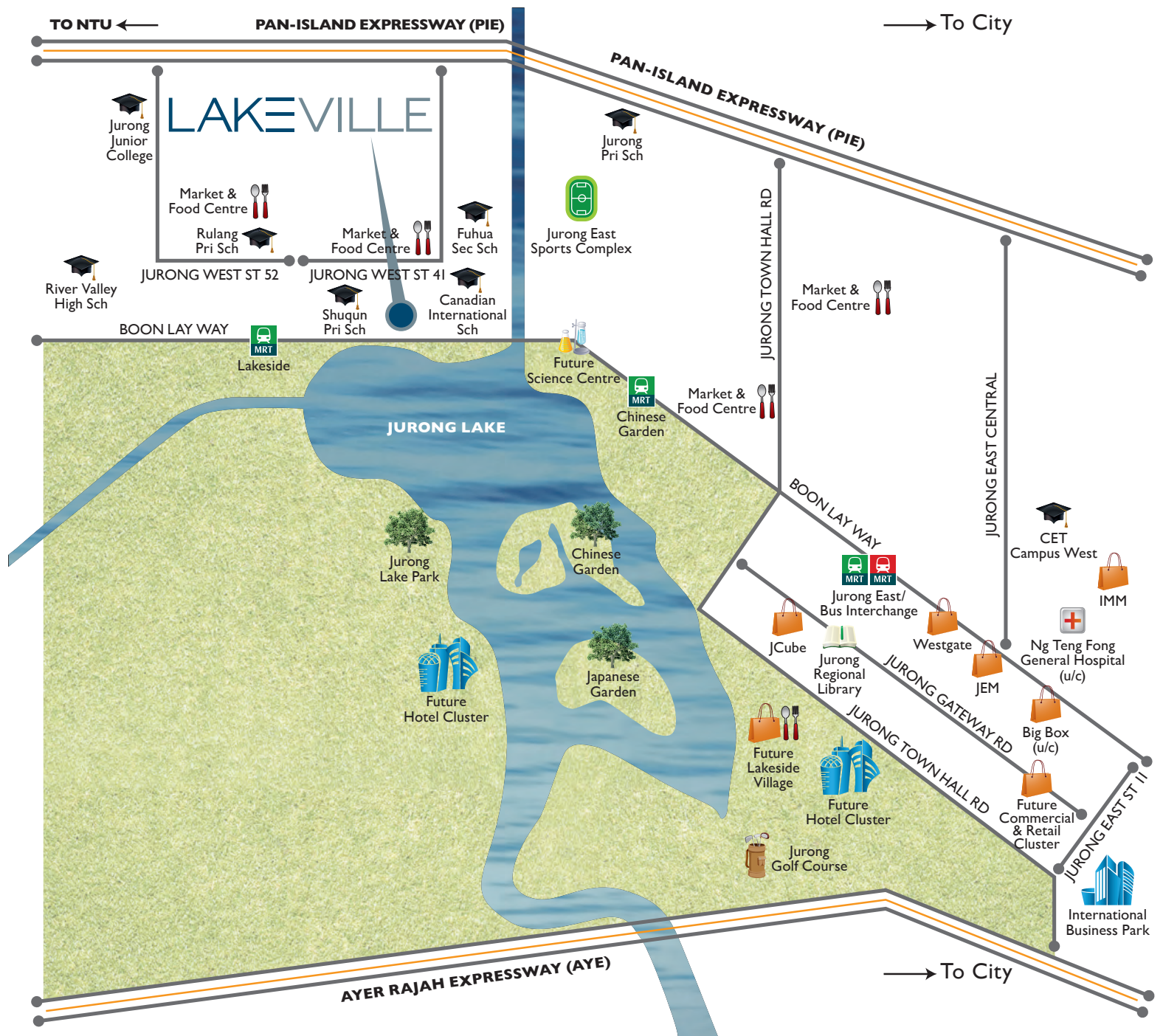


# THE CONVENIENCE OF COUNTLESS CONNECTIONS.

From your well-positioned home with **two MRT stations** at your doorstep, the journeys will be short yet sweet, leading to a multitude of experiences. Shop till you drop at **Westgate, JEM, IMM, and JCube**. Explore the upcoming world class **Science Centre**, edutainment attractions as well as **Lakeside Village** with its shopping, dining and entertainment offerings and boutique hotels.

Just a stroll away are educational institutes like **Canadian International School** and **Rulang Primary School**. Savour authentic local delicacies and stock up on fresh food at the nearby markets and food centres.





MAP IS NOT DRAWN TO SCALE







# A DISTINCTIVE CHARM, FOUND NOWHERE ELSE.

Be intimately acquainted with stunning natural beauty. **Jurong Lake** is your next door neighbour, and the **Chinese and Japanese Gardens** are its charming residents.

Stroll along the 235m **boardwalk** and fishing deck, explore the **waterfront park and promenade** with exciting water activities, or try for a hole-in-one at **Jurong Country Club**. Take in a deep breath of endless summer, and get accustomed to spectacular lake vistas and an environment of serenity unique to this vantage point.



# I MMERSE IN PURE INDULGENCE.

---

Lie back, relax, and open up to infinite experiences. As the lakeside breeze caresses you, let norms go out the window, and be transported into another world. Where life and loves are artfully blended with proportions and balance, and home is something truly magical.



THIS IS WHERE  
LIFE BEGINS.

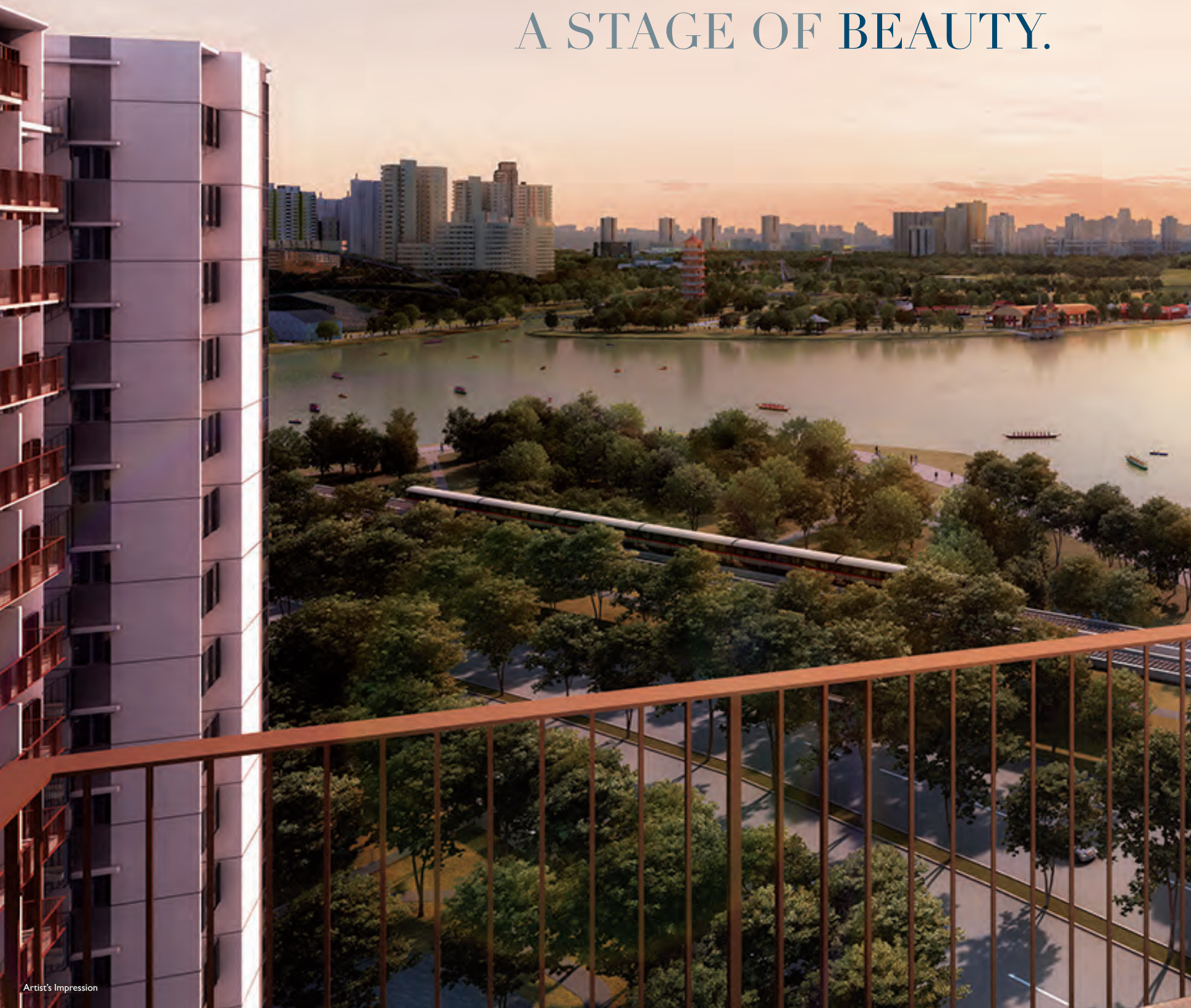


This is where all your cares end, and where life begins. Follow the waterway as it weaves a hundred metres through a series of glistening azure blue pools from the **Starlight Dip Pool** and **Spa Coves**, to the **50m Lap Pool**, leading towards the **Little Splash Pool** and **Rainbow Waterplay**. Dine in comfort, under the **Alfresco Sails**, or simply relax in the **Cloud Curls** or dream in the **Dreamweavers**.

You can also stay in the pink of health at the well-equipped gym and fitness stations, while your kids have a blast at the **Orion Playland**.



OPEN UP TO  
A STAGE OF BEAUTY.





Commanding a privileged position amidst a lovely location, residents of LakeVille can enjoy scenic beauty every day. For the majority of residences, simply opening the curtains will bring in panoramic views of Jurong Lake into the living space. This is a rare lake view enjoyed by few others in Singapore.



# EVEN INDOORS, WE FIND MUCH TO DISCOVER.

Your home becomes your very own canvas for a living masterpiece, as the power of your imagination brings space to life. Make your selection from a wide variety of 1 to 5 bedrooms, dual-key and penthouse residences designed to cater to every need, boasting spacious and efficient layouts in a multitude of configurations.

The highly functional private enclosed spaces, balconies and terraces have been thoughtfully positioned, allowing you to step out and take in the views. At LakeVille, you create the possibilities for stylish homemaking.









Adding fine touches to the ensemble are high quality imported finishes, and stylish fittings that complement every corner of this elegant home. The luxurious bathrooms are appointed with deluxe sanitary wares and fittings, and the fully-equipped kitchen is graced with branded electrical appliances.



Artist's Impression



Artist's Impression

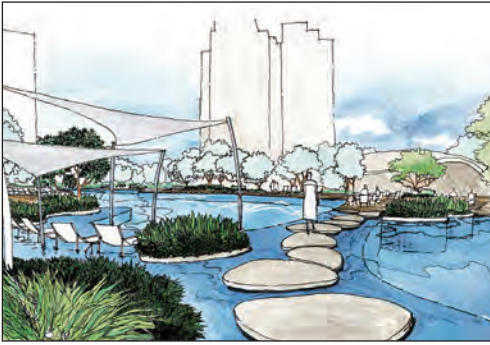


Artist's Impression



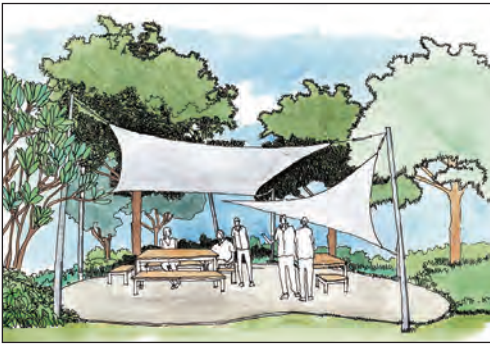
Artist's Impression

# SITE PLAN



D

Cloud Steps



E

Sail Cabanas



G

Wind Sculpture



K

Cloud Curls

## LIFESTYLE

- A** Grand Entrance
- B** Clubhouse
  - Lounge
  - Gym
  - Shops
- C** Poolside Deck

- D** Cloud Steps
- E** Sail Cabanas
- F** Viewing Deck
- G** Wind Sculpture
- H** Alfresco Sails
- I** Side Gate

- J** Dreamweavers
- K** Cloud Curls
- L** Reflexology Walk
- M** Fitness Stations
- N** Orion Playland
- O** Tennis Court





**AQUA**

- A** Aqua Deck
- B** Fountain Jets
- C** Rainbow Waterplay
- D** Little Splash Pool
- E** Aqua Gym
- F** 50m Lap Pool
- G** Starlight Dip Pool
- H** Spa Covers
- I** Reflective Water Feature

**SIGNATURE GARDENS**

- A** Verdant Plateau
- B** Sunset Boulevard
- C** Earthly Elements
- D** Silver Delta
- E** Golden Estuary
- F** Purple Bankside



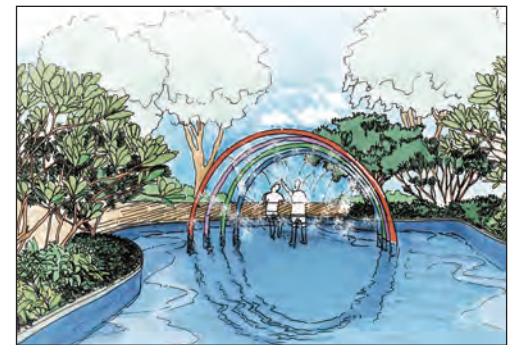
Dreamweavers

**J**



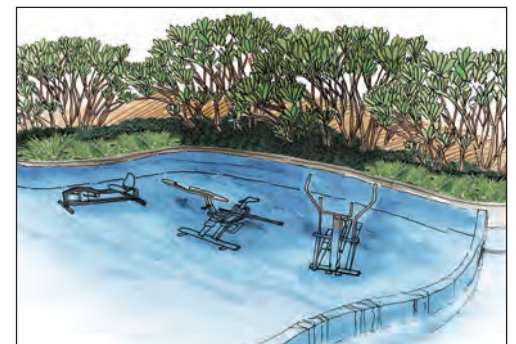
Orion Playland

**N**



Rainbow Waterplay

**C**



Aqua Gym

**E**





## 9 JURONG LAKE LINK


UNIT STOREY	30	31	32	33	34	35	36
	<b>PH5</b> 2239 sq ft		<b>PH3</b> 2271 sq ft			<b>PH1</b> 1981 sq ft	
16	<b>D3</b> 1281 sq ft	<b>B1</b> 635 sq ft	<b>D2</b> 1302 sq ft	<b>B3</b> 732 sq ft	<b>C1</b> 872 sq ft	<b>C4</b> 1119 sq ft	<b>B4a</b> 775 sq ft
15	<b>D3</b> 1281 sq ft	<b>B1</b> 635 sq ft	<b>D2</b> 1302 sq ft	<b>B3</b> 732 sq ft	<b>C1</b> 872 sq ft	<b>C4</b> 1119 sq ft	<b>B4a</b> 775 sq ft
14	<b>D3</b> 1281 sq ft	<b>B1</b> 635 sq ft	<b>D2</b> 1302 sq ft	<b>B3</b> 732 sq ft	<b>C1</b> 872 sq ft	<b>C4</b> 1119 sq ft	<b>B4a</b> 775 sq ft
13	<b>D3</b> 1281 sq ft	<b>B1</b> 635 sq ft	<b>D2</b> 1302 sq ft	<b>B3</b> 732 sq ft	<b>C1</b> 872 sq ft	<b>C4</b> 1119 sq ft	<b>B4a</b> 775 sq ft
12	<b>D3</b> 1281 sq ft	<b>B1</b> 635 sq ft	<b>D2</b> 1302 sq ft	<b>B3</b> 732 sq ft	<b>C1</b> 872 sq ft	<b>C4</b> 1119 sq ft	<b>B4a</b> 775 sq ft
11	<b>D3</b> 1281 sq ft	<b>B1</b> 635 sq ft	<b>D2</b> 1302 sq ft	<b>B3</b> 732 sq ft	<b>C1</b> 872 sq ft	<b>C4</b> 1119 sq ft	<b>B4a</b> 775 sq ft
10	<b>D3</b> 1281 sq ft	<b>B1</b> 635 sq ft	<b>D2</b> 1302 sq ft	<b>B3</b> 732 sq ft	<b>C1</b> 872 sq ft	<b>C4</b> 1119 sq ft	<b>B4a</b> 775 sq ft
9	<b>D3</b> 1281 sq ft	<b>B1</b> 635 sq ft	<b>D2</b> 1302 sq ft	<b>B3</b> 732 sq ft	<b>C1</b> 872 sq ft	<b>C4</b> 1119 sq ft	<b>B4a</b> 775 sq ft
8	<b>D3</b> 1281 sq ft	<b>B1</b> 635 sq ft	<b>D2</b> 1302 sq ft	<b>B3</b> 732 sq ft	<b>C1</b> 872 sq ft	<b>C4</b> 1119 sq ft	<b>B4a</b> 775 sq ft
7	<b>D3</b> 1281 sq ft	<b>B1</b> 635 sq ft	<b>D2</b> 1302 sq ft	<b>B3</b> 732 sq ft	<b>C1</b> 872 sq ft	<b>C4</b> 1119 sq ft	<b>B4a</b> 775 sq ft
6	<b>D3</b> 1281 sq ft	<b>B1</b> 635 sq ft	<b>D2</b> 1302 sq ft	<b>B3</b> 732 sq ft	<b>C1</b> 872 sq ft	<b>C4</b> 1119 sq ft	<b>B4a</b> 775 sq ft
5	<b>D3</b> 1281 sq ft	<b>B1</b> 635 sq ft	<b>D2</b> 1302 sq ft	<b>B3</b> 732 sq ft	<b>C1</b> 872 sq ft	<b>C4</b> 1119 sq ft	<b>B4a</b> 775 sq ft
4	<b>D3</b> 1281 sq ft	<b>B1</b> 635 sq ft	<b>D2</b> 1302 sq ft	<b>B3</b> 732 sq ft	<b>C1</b> 872 sq ft	<b>C4</b> 1119 sq ft	<b>B4a</b> 775 sq ft
3	<b>D3</b> 1281 sq ft	<b>B1</b> 635 sq ft	<b>D2</b> 1302 sq ft	<b>B3</b> 732 sq ft	<b>C1</b> 872 sq ft	<b>C4</b> 1119 sq ft	<b>B4a</b> 775 sq ft
2	<b>D3</b> 1281 sq ft	<b>B1</b> 635 sq ft	<b>D2</b> 1302 sq ft	<b>B3</b> 732 sq ft	<b>C1</b> 872 sq ft	<b>C4</b> 1119 sq ft	<b>B4a</b> 775 sq ft
1	<b>D3-P</b> 1442 sq ft	<b>B1-Pb</b> 678 sq ft	<b>D2-P</b> 1464 sq ft	<b>B3-Pb</b> 872 sq ft		<b>C4-P</b> 1324 sq ft	<b>B4a-P</b> 807 sq ft


## 11 JURONG LAKE LINK

UNIT STOREY	37	38	39	40	41	42	43	44
	<b>PH4</b> 2228 sq ft				<b>PH2</b> 2056 sq ft		<b>PH6</b> 2680 sq ft	
16	<b>D1</b> 1270 sq ft	<b>B1a</b> 635 sq ft	<b>A1</b> 560 sq ft	<b>C2</b> 969 sq ft	<b>C7</b> 1163 sq ft	<b>B2</b> 721 sq ft	<b>E1</b> 1528 sq ft	<b>B4b</b> 764 sq ft
15	<b>D1</b> 1270 sq ft	<b>B1a</b> 635 sq ft	<b>A1</b> 560 sq ft	<b>C2</b> 969 sq ft	<b>C7</b> 1163 sq ft	<b>B2</b> 721 sq ft	<b>E1</b> 1528 sq ft	<b>B4b</b> 764 sq ft
14	<b>D1</b> 1270 sq ft	<b>B1a</b> 635 sq ft	<b>A1</b> 560 sq ft	<b>C2</b> 969 sq ft	<b>C7</b> 1163 sq ft	<b>B2</b> 721 sq ft	<b>E1</b> 1528 sq ft	<b>B4b</b> 764 sq ft
13	<b>D1</b> 1270 sq ft	<b>B1a</b> 635 sq ft	<b>A1</b> 560 sq ft	<b>C2</b> 969 sq ft	<b>C7</b> 1163 sq ft	<b>B2</b> 721 sq ft	<b>E1</b> 1528 sq ft	<b>B4b</b> 764 sq ft
12	<b>D1</b> 1270 sq ft	<b>B1a</b> 635 sq ft	<b>A1</b> 560 sq ft	<b>C2</b> 969 sq ft	<b>C7</b> 1163 sq ft	<b>B2</b> 721 sq ft	<b>E1</b> 1528 sq ft	<b>B4b</b> 764 sq ft
11	<b>D1</b> 1270 sq ft	<b>B1a</b> 635 sq ft	<b>A1</b> 560 sq ft	<b>C2</b> 969 sq ft	<b>C7</b> 1163 sq ft	<b>B2</b> 721 sq ft	<b>E1</b> 1528 sq ft	<b>B4b</b> 764 sq ft
10	<b>D1</b> 1270 sq ft	<b>B1a</b> 635 sq ft	<b>A1</b> 560 sq ft	<b>C2</b> 969 sq ft	<b>C7</b> 1163 sq ft	<b>B2</b> 721 sq ft	<b>E1</b> 1528 sq ft	<b>B4b</b> 764 sq ft
9	<b>D1</b> 1270 sq ft	<b>B1a</b> 635 sq ft	<b>A1</b> 560 sq ft	<b>C2</b> 969 sq ft	<b>C7</b> 1163 sq ft	<b>B2</b> 721 sq ft	<b>E1</b> 1528 sq ft	<b>B4b</b> 764 sq ft
8	<b>D1</b> 1270 sq ft	<b>B1a</b> 635 sq ft	<b>A1</b> 560 sq ft	<b>C2</b> 969 sq ft	<b>C7</b> 1163 sq ft	<b>B2</b> 721 sq ft	<b>E1</b> 1528 sq ft	<b>B4b</b> 764 sq ft
7	<b>D1</b> 1270 sq ft	<b>B1a</b> 635 sq ft	<b>A1</b> 560 sq ft	<b>C2</b> 969 sq ft	<b>C7</b> 1163 sq ft	<b>B2</b> 721 sq ft	<b>E1</b> 1528 sq ft	<b>B4b</b> 764 sq ft
6	<b>D1</b> 1270 sq ft	<b>B1a</b> 635 sq ft	<b>A1</b> 560 sq ft	<b>C2</b> 969 sq ft	<b>C7</b> 1163 sq ft	<b>B2</b> 721 sq ft	<b>E1</b> 1528 sq ft	<b>B4b</b> 764 sq ft
5	<b>D1</b> 1270 sq ft	<b>B1a</b> 635 sq ft	<b>A1</b> 560 sq ft	<b>C2</b> 969 sq ft	<b>C7</b> 1163 sq ft	<b>B2</b> 721 sq ft	<b>E1</b> 1528 sq ft	<b>B4b</b> 764 sq ft
4	<b>D1</b> 1270 sq ft	<b>B1a</b> 635 sq ft	<b>A1</b> 560 sq ft	<b>C2</b> 969 sq ft	<b>C7</b> 1163 sq ft	<b>B2</b> 721 sq ft	<b>E1</b> 1528 sq ft	<b>B4b</b> 764 sq ft
3	<b>D1</b> 1270 sq ft	<b>B1a</b> 635 sq ft	<b>A1</b> 560 sq ft	<b>C2</b> 969 sq ft	<b>C7</b> 1163 sq ft	<b>B2</b> 721 sq ft	<b>E1</b> 1528 sq ft	<b>B4b</b> 764 sq ft
2	<b>D1</b> 1270 sq ft	<b>B1a</b> 635 sq ft	<b>A1</b> 560 sq ft	<b>C2</b> 969 sq ft	<b>C7</b> 1163 sq ft	<b>B2</b> 721 sq ft	<b>E1</b> 1528 sq ft	<b>B4b</b> 764 sq ft
1	<b>D1-P</b> 1432 sq ft	<b>B1a-Pb</b> 678 sq ft			<b>C7-P</b> 1324 sq ft	<b>B2-P</b> 775 sq ft	<b>E1-P</b> 1862 sq ft	<b>B4b-P</b> 807 sq ft

### LEGEND


 1-BEDROOM

 2-BEDROOM

 3-BEDROOM

 4-BEDROOM

 4-BEDROOM (DUAL-KEY)

 5-BEDROOM

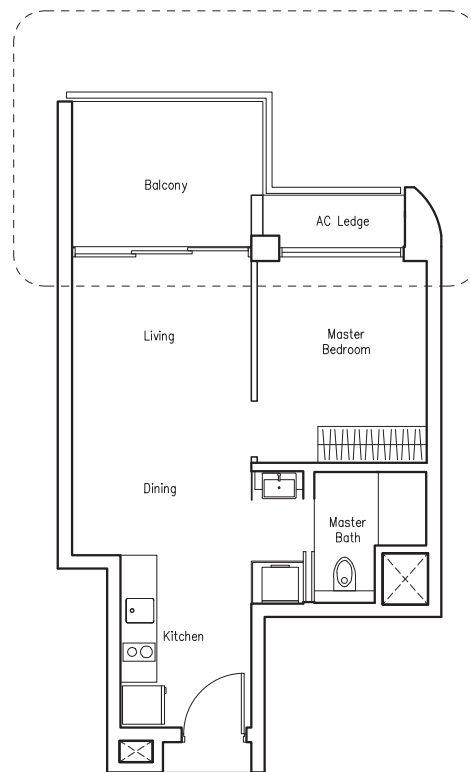
 4-BEDROOM PENTHOUSE

 4-BEDROOM + STUDY PENTHOUSE

 5-BEDROOM PENTHOUSE

# SUITES

## 1 BEDROOM

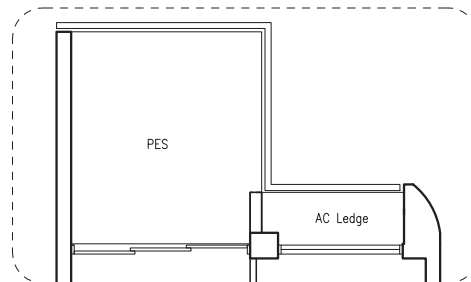


### Type A1

52 sq m | 560 sq ft

#02-03 TO #16-03

#02-39 TO #16-39

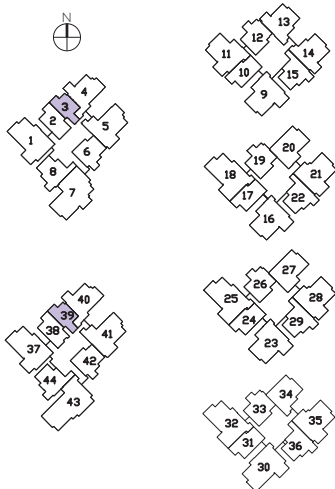


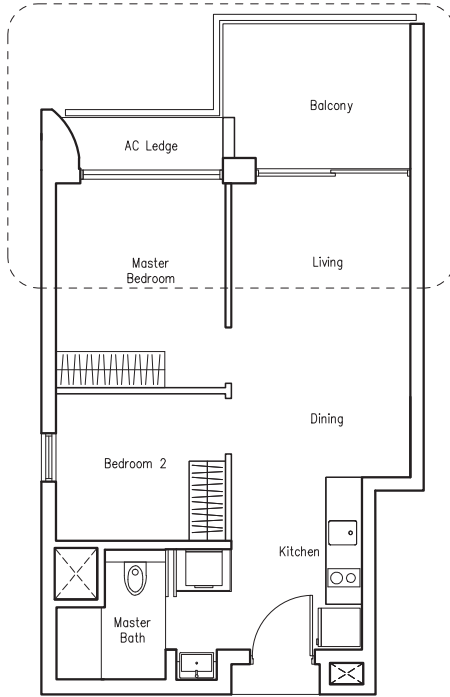
### Type A1-P

55 sq m | 592 sq ft

(including PES of 12 sq m / 129 sq ft)

#01-03





### Type B1

59 sq m | 635 sq ft

#02-10 TO #16-10

#02-17 TO #16-17

#02-24 TO #16-24

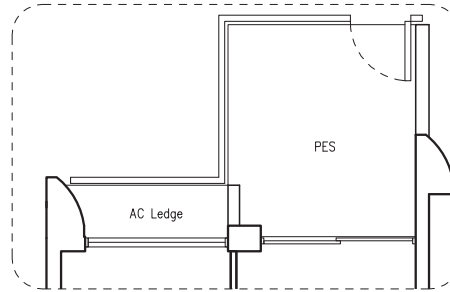
#02-31 TO #16-31

### Type B1a

59 sq m | 635 sq ft

#02-02 TO #16-02

#02-38 TO #16-38

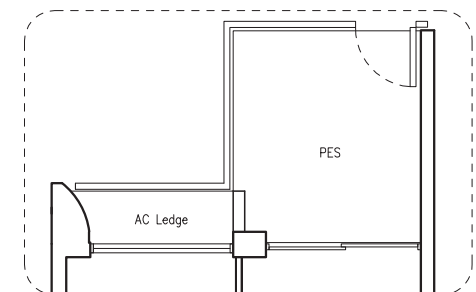


### TYPE B1-Pa

63 sq m | 678 sq ft

(including PES of 12 sq m/ 129 sq ft)

#01-10



### TYPE B1-Pb

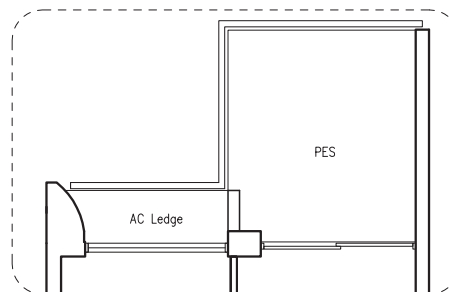
63 sq m | 678 sq ft

(including PES of 12 sq m/ 129 sq ft)

#01-17

#01-24

#01-31



### TYPE B1a-Pb

63 sq m | 678 sq ft

(including PES of 12 sq m/ 129 sq ft)

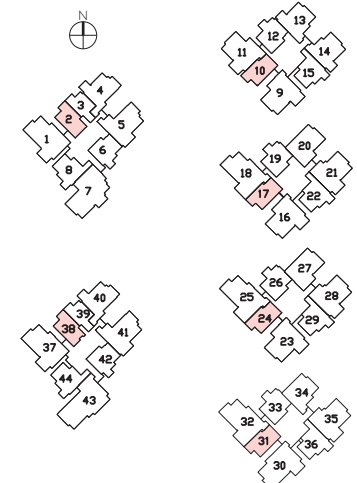
#01-38

### TYPE B1a-Pa

63 sq m | 678 sq ft

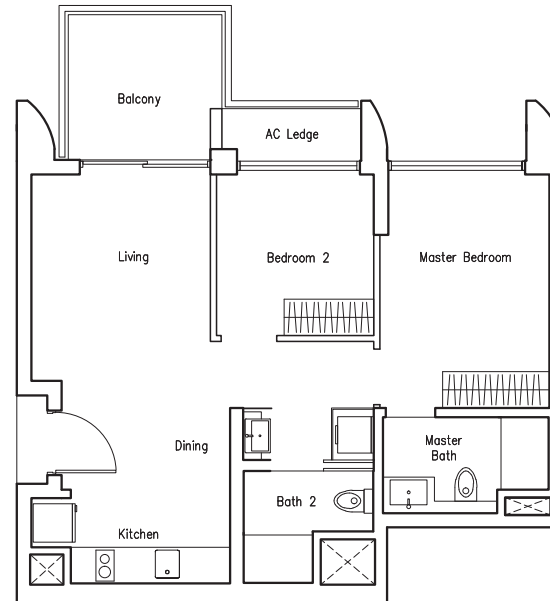
(including PES of 12 sq m/ 129 sq ft)

#01-02



# SUITES

## 2 BEDROOM

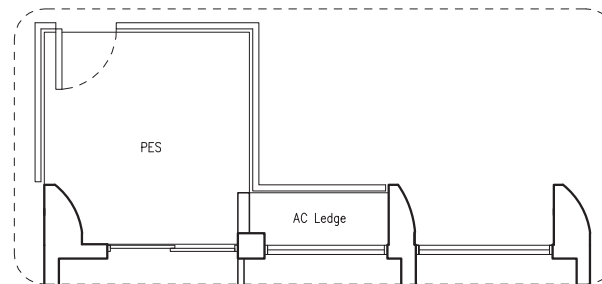


### Type B2

67 sq m | 721 sq ft

#02-06 TO #16-06

#02-42 TO #16-42



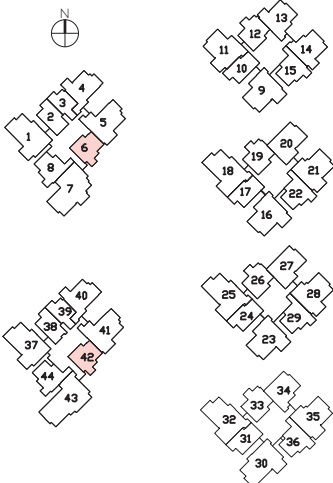
### TYPE B2-P

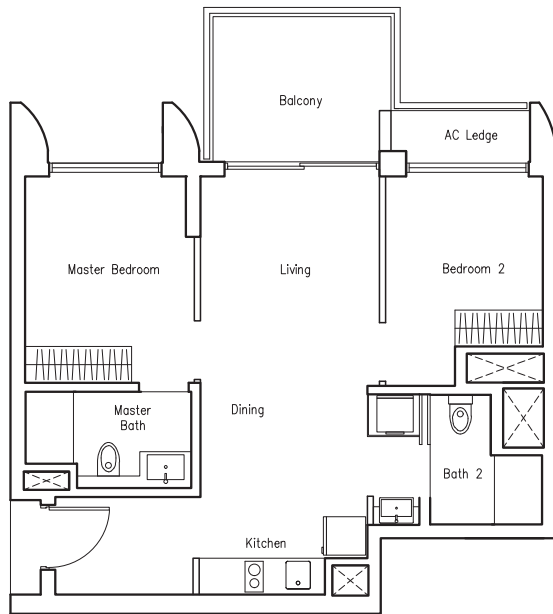
72 sq m | 775 sq ft

(including PES of 12 sq m/ 129 sq ft)

#01-06

#01-42





### Type B3

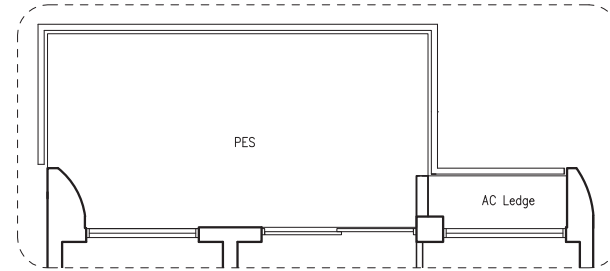
68 sq m | 732 sq ft

#02-12 TO #16-12

#02-19 TO #16-19

#02-26 TO #16-26

#02-33 TO #16-33

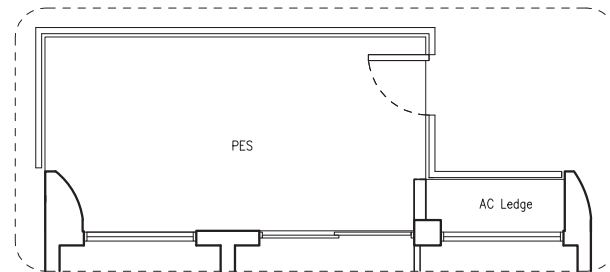


### TYPE B3-Pa

81 sq m | 872 sq ft

(including PES of 21 sq m/ 226 sq ft)

#01-12



### TYPE B3-Pb

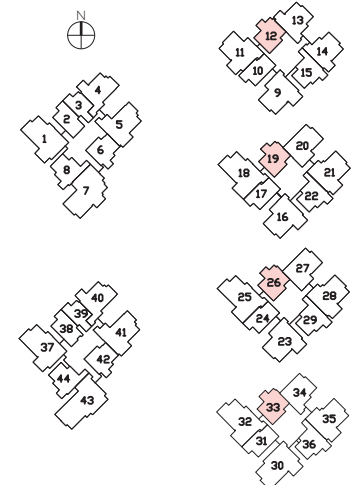
81 sq m | 872 sq ft

(including PES of 21 sq m/ 226 sq ft)

#01-19

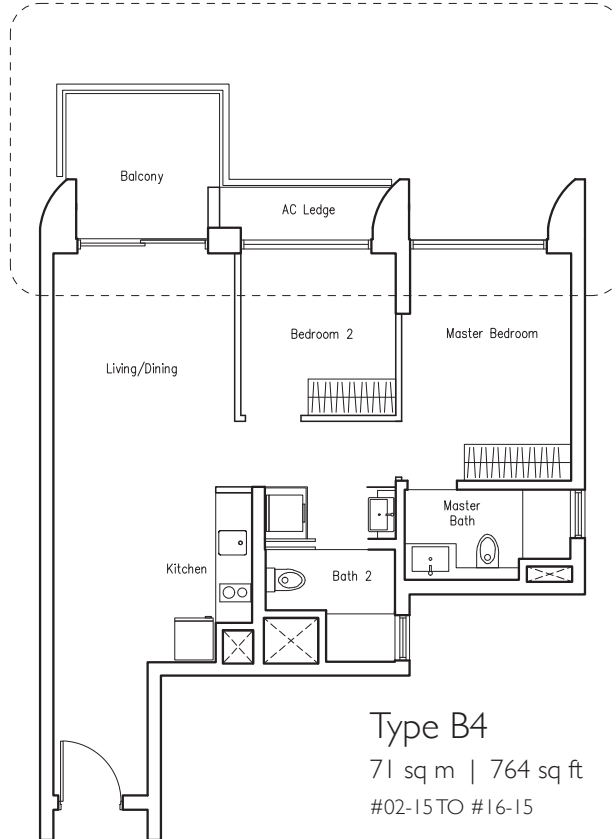
#01-26

#01-33



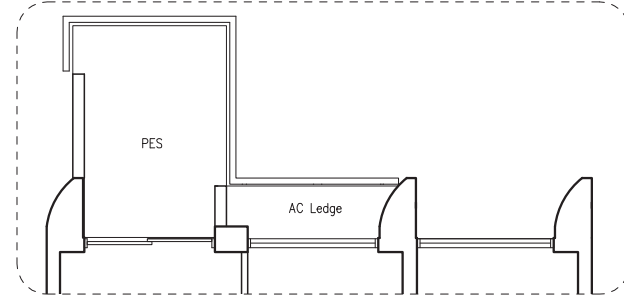
# SUITES

## 2 BEDROOM

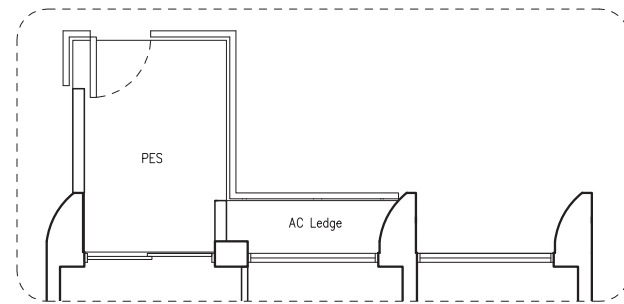


Type B4  
71 sq m | 764 sq ft  
#02-15 TO #16-15

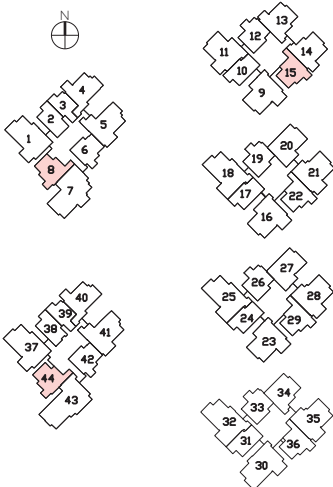
Type B4b  
71 sq m | 764 sq ft  
#02-08 TO #16-08  
#02-44 TO #16-44



TYPE B4-P  
75 sq m | 807 sq ft  
(including PES of 9 sq m/ 97 sq ft)  
#01-15

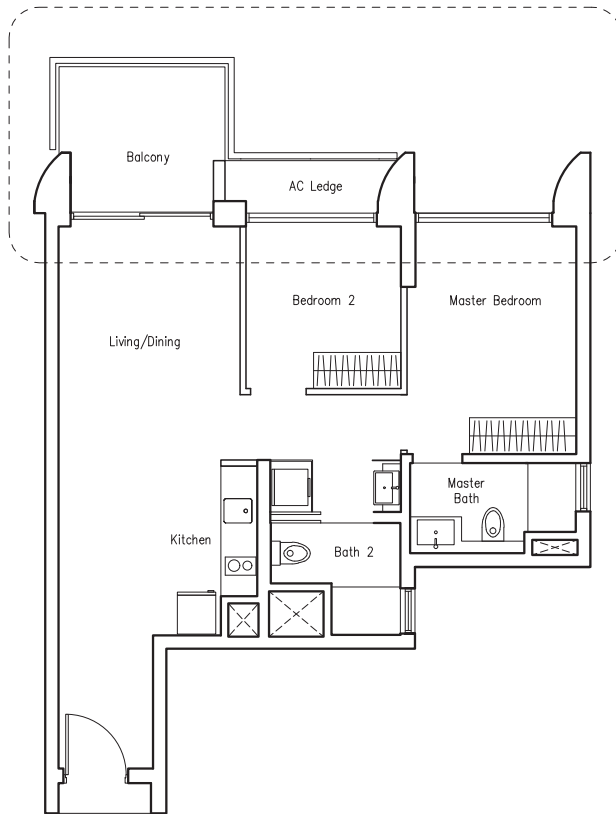


TYPE B4b-P  
75 sq m | 807 sq ft  
(including PES of 9 sq m/ 97 sq ft)  
#01-08  
#01-44



# SUITES

## 2 BEDROOM



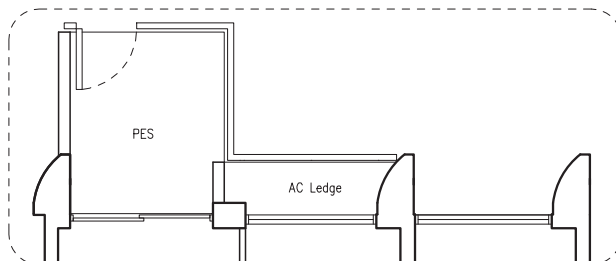
### TYPE B4a

72 sq m | 775 sq ft

#02-22 TO #16-22

#02-29 TO #16-29

#02-36 TO #16-36



### TYPE B4a-P

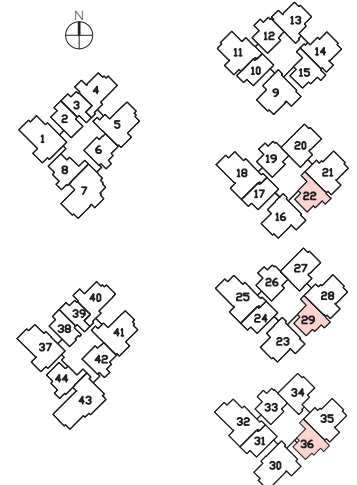
75 sq m | 807 sq ft

(including PES of 9 sq m/ 97 sq ft)

#01-22

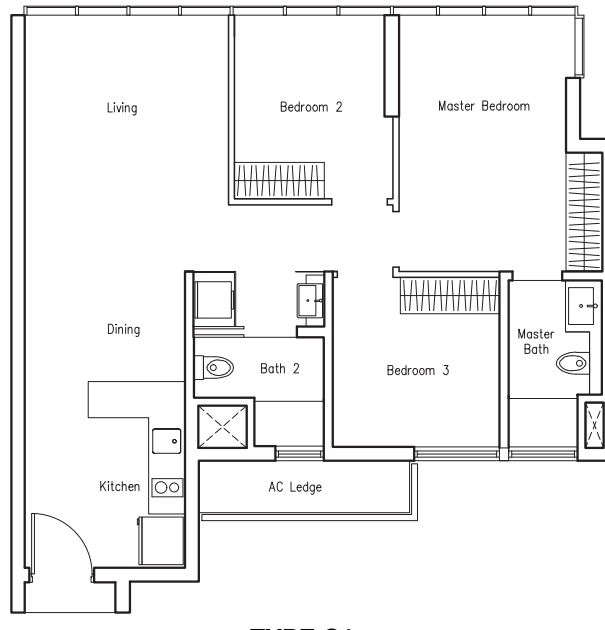
#01-29

#01-36



# SUITES

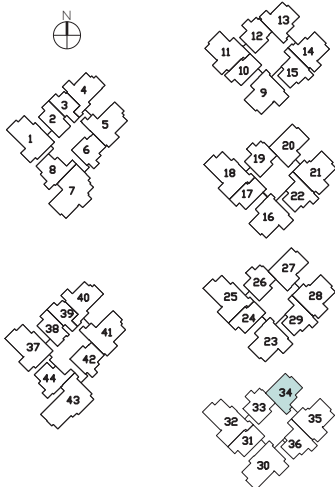
## 3 BEDROOM



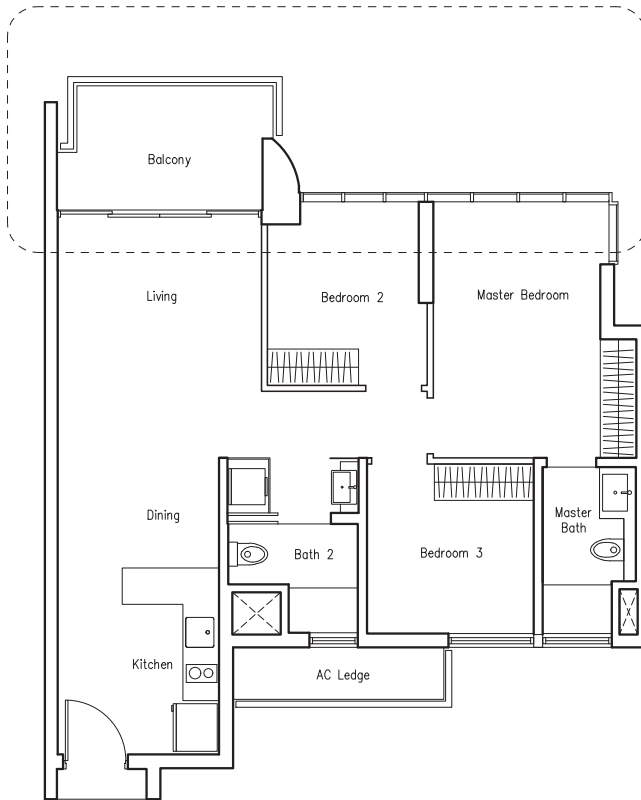
### TYPE C1

81 sq m | 872 sq ft

#02-34 TO #16-34



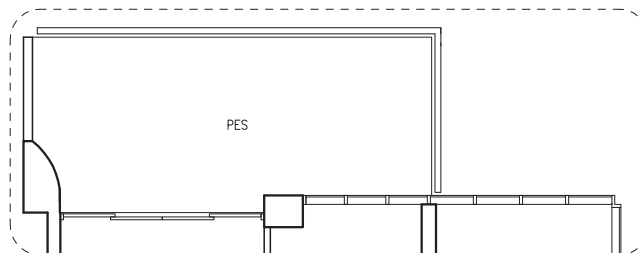




### TYPE C1a

87 sq m | 936 sq ft

#02-14 TO #16-14

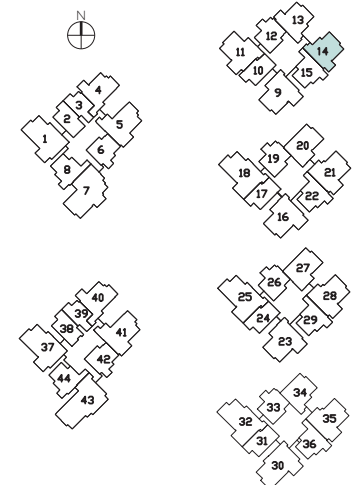


### TYPE C1a-P

99 sq m | 1066 sq ft

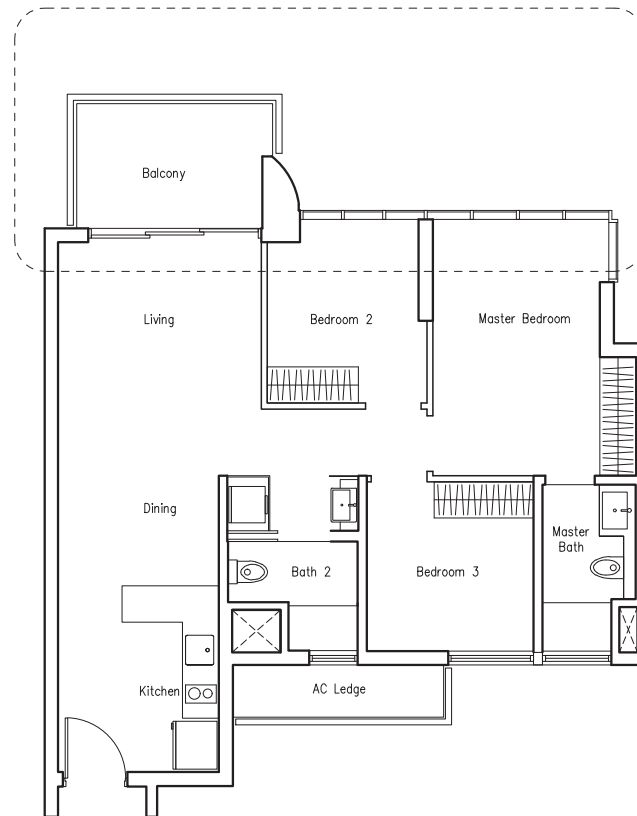
(including PES of 20 sq m / 215 sq ft)

#01-14



# SUITES

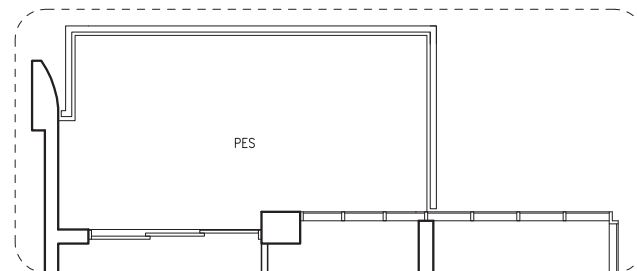
## 3 BEDROOM



### TYPE C1b

88 sq m | 947 sq ft

#02-13 TO #16-13

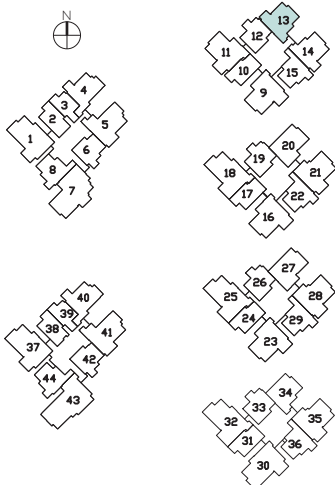


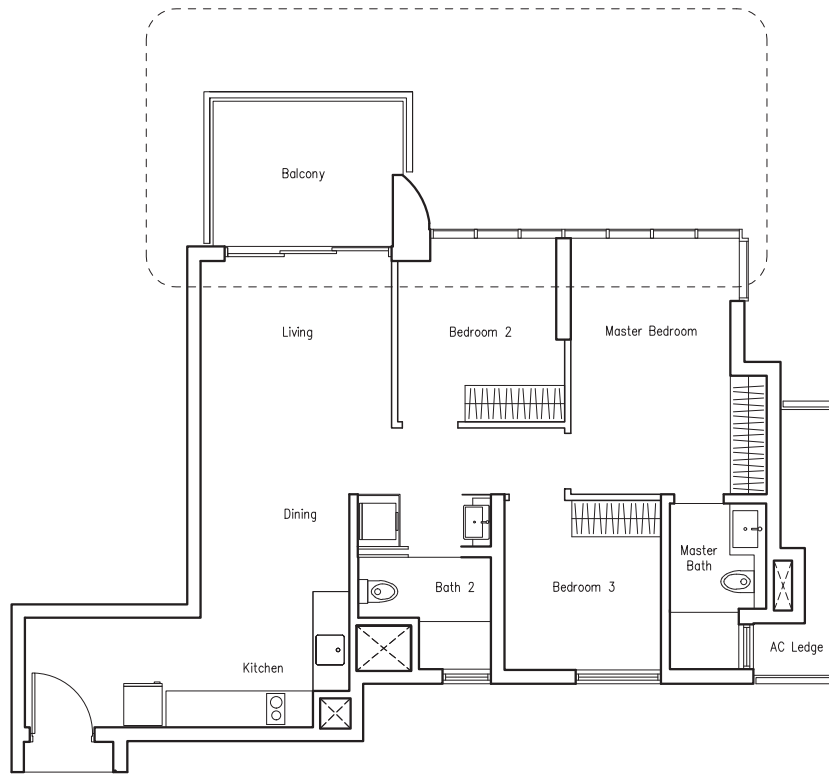
### TYPE C1b-P

100 sq m | 1076 sq ft

(including PES of 20 sq m / 215 sq ft)

#01-13



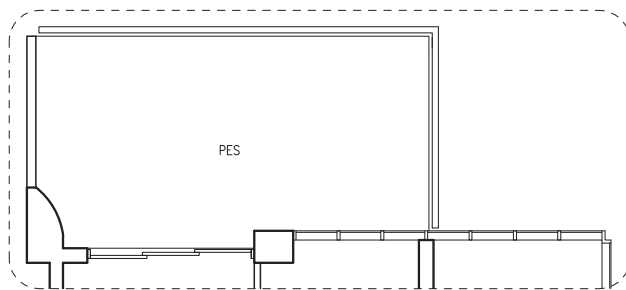


### TYPE C2

90 sq m | 969 sq ft

#02-04 TO #16-04

#02-40 TO #16-40

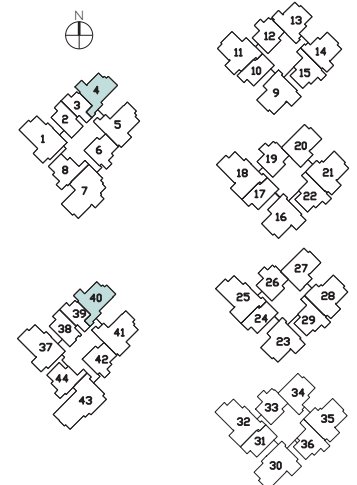


### TYPE C2-P

103 sq m | 1109 sq ft

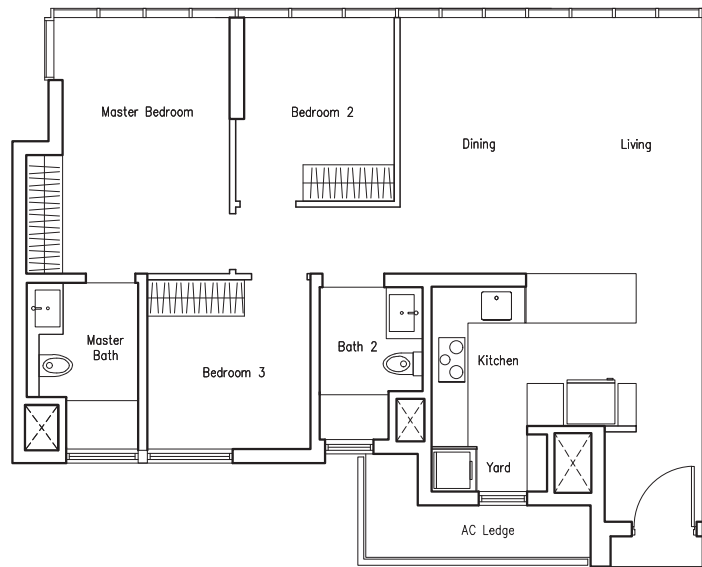
(including PES of 23 sq m / 248 sq ft)

#01-04



# SUITES

## 3 BEDROOM

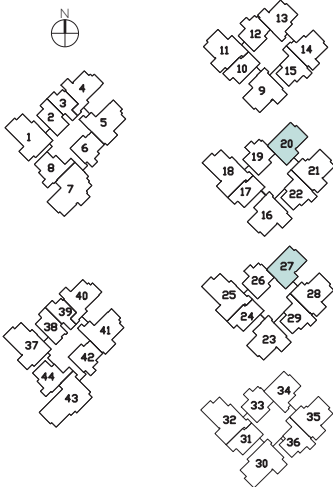


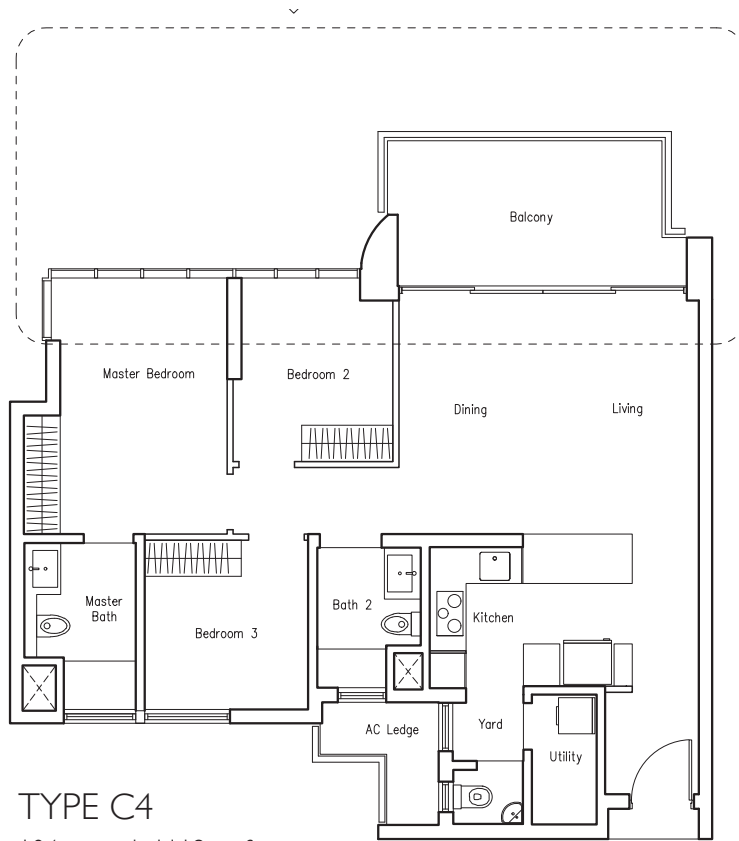
### TYPE C3

92 sq m | 990 sq ft

#02-20 TO #16-20

#02-27 TO #16-27





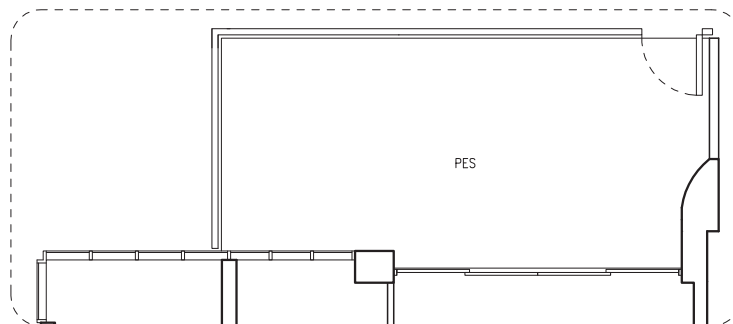
### TYPE C4

104 sq m | 1119 sq ft

#02-21 TO #15-21

#02-28 TO #15-28

#02-35 TO #15-35



### TYPE C4-P

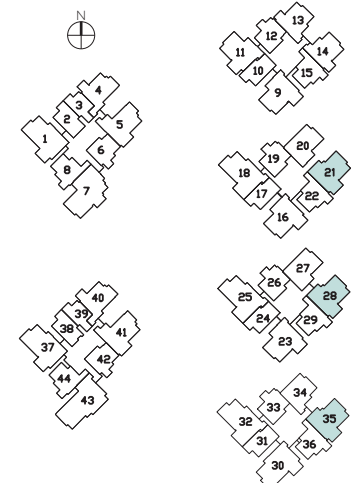
123 sq m | 1324 sq ft

(including PES of 31 sq m/ 334 sq ft)

#01-21

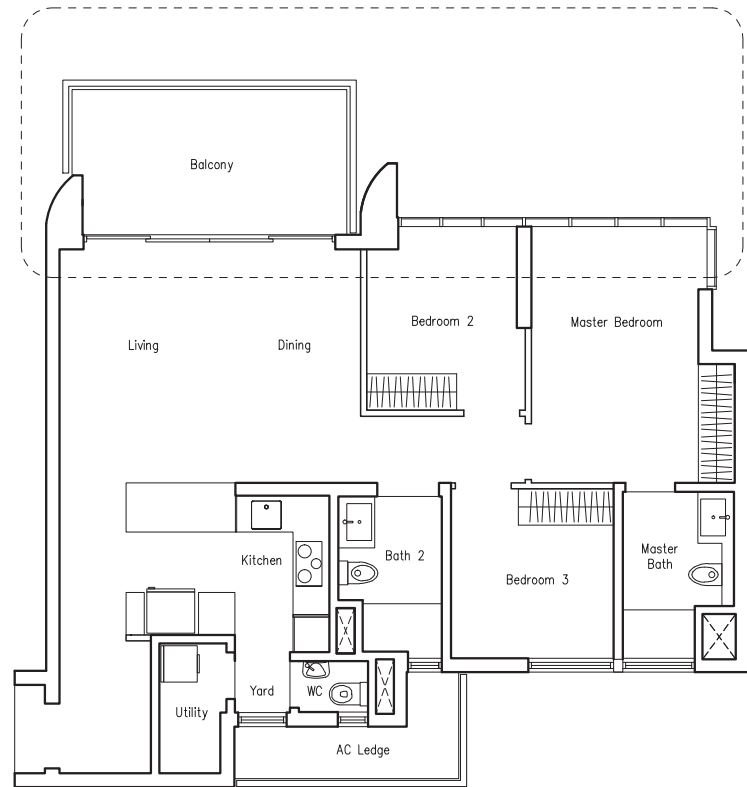
#01-28

#01-35



# SUITES

## 3 BEDROOM



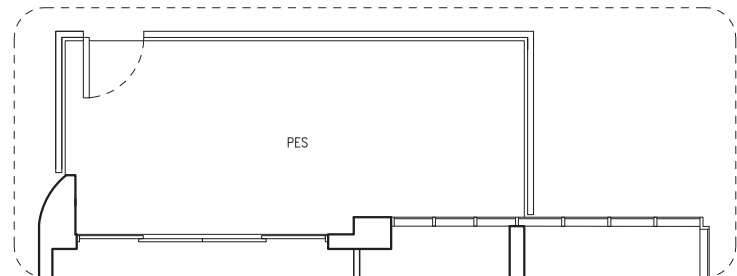
### TYPE C5

106 sq m | 1141 sq ft

#02-09 TO #16-09

#02-16 TO #16-16

#02-23 TO #16-23



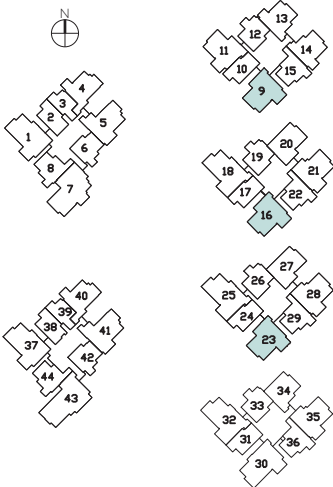
### TYPE C5-P

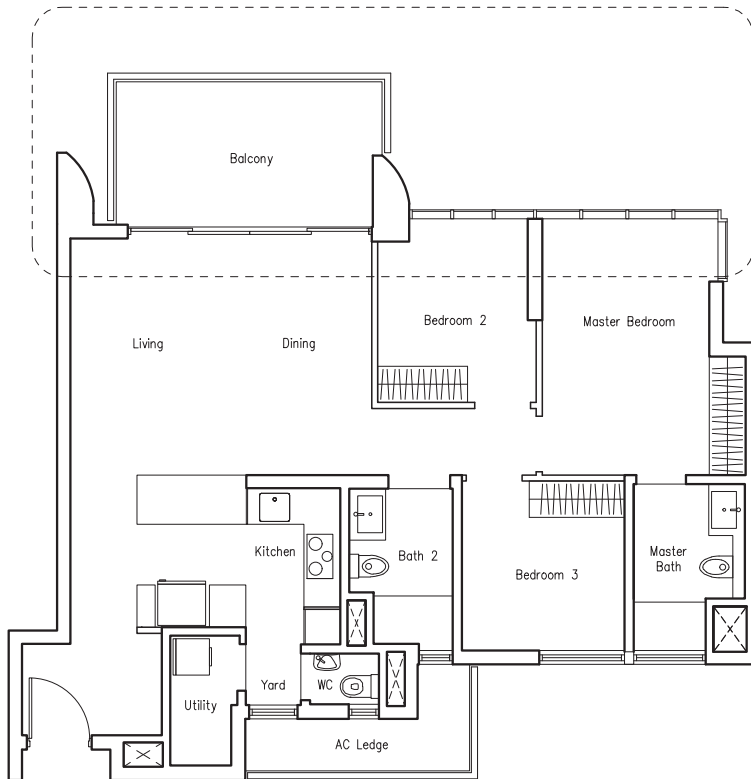
119 sq m | 1281 sq ft

(including PES of 25 sq m / 269 sq ft)

#01-16

#01-23

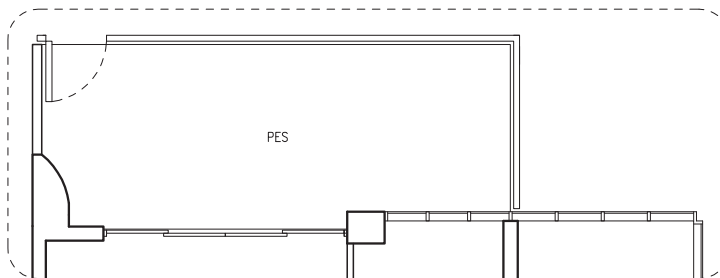




### TYPE C6

106 sq m | 1141 sq ft

#02-11 TO #16-11

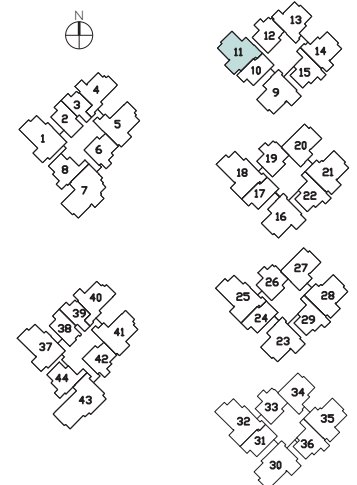


### TYPE C6-P

119 sq m | 1281 sq ft

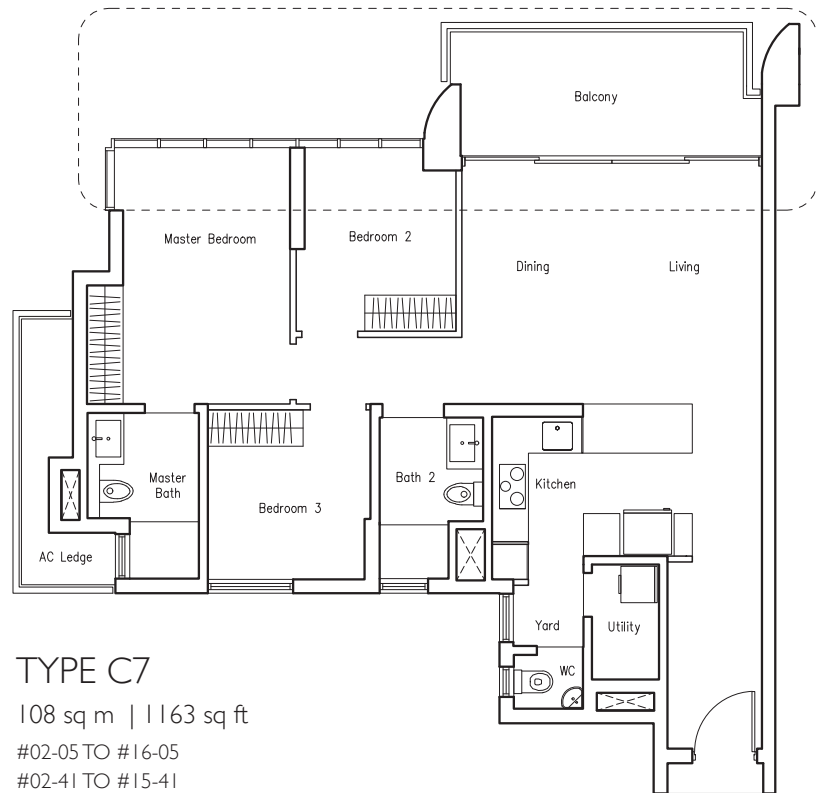
(including PES of 24 sq m / 258 sq ft)

#01-11



# SUITES

## 3 BEDROOM

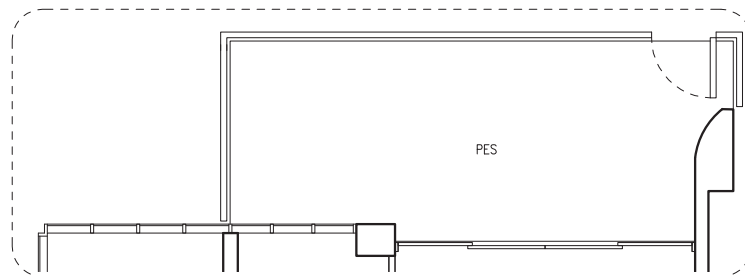


### TYPE C7

108 sq m | 1163 sq ft

#02-05 TO #16-05

#02-41 TO #15-41



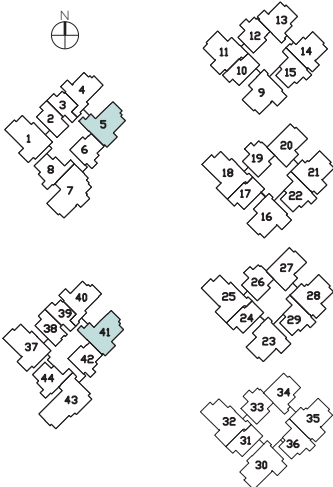
### TYPE C7-P

123 sq m | 1324 sq ft

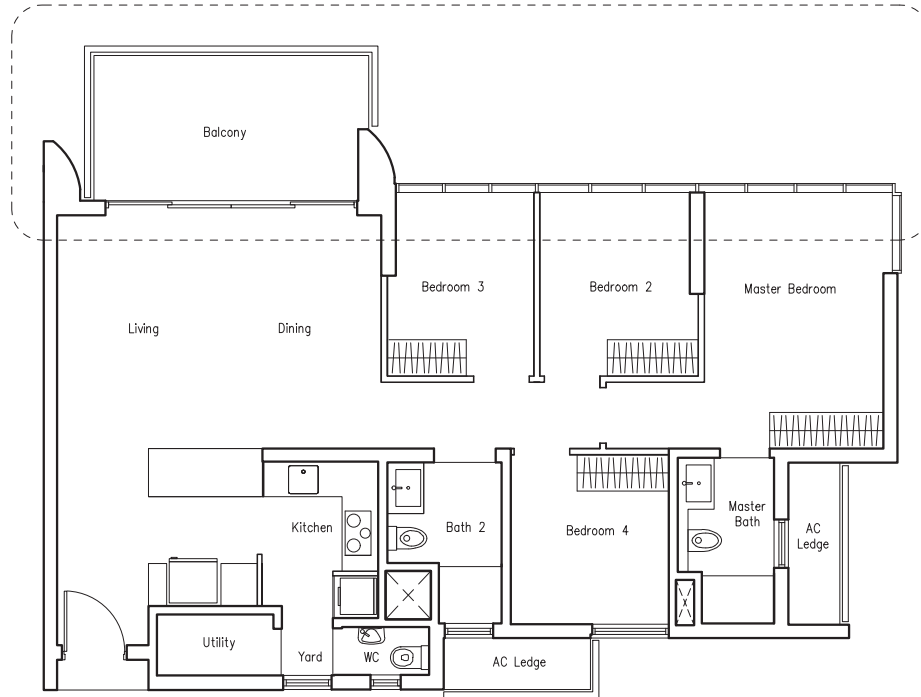
(including PES of 27 sq m/ 291 sq ft)

#01-05

#01-41





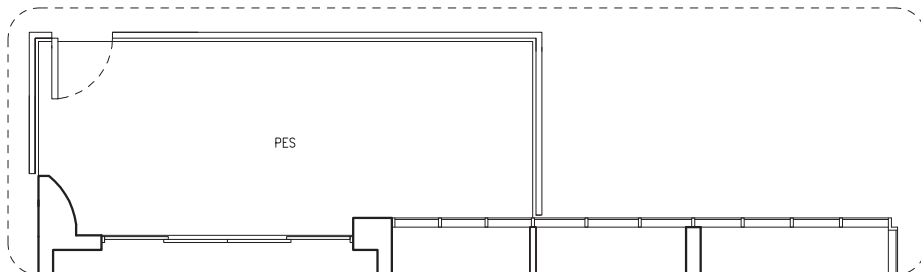


### TYPE D I

118 sq m | 1270 sq ft

#03-01 TO #15-01

#02-37 TO #15-37

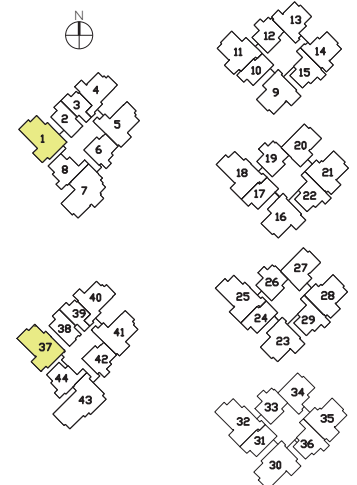


### TYPE D I-P

133 sq m | 1432 sq ft

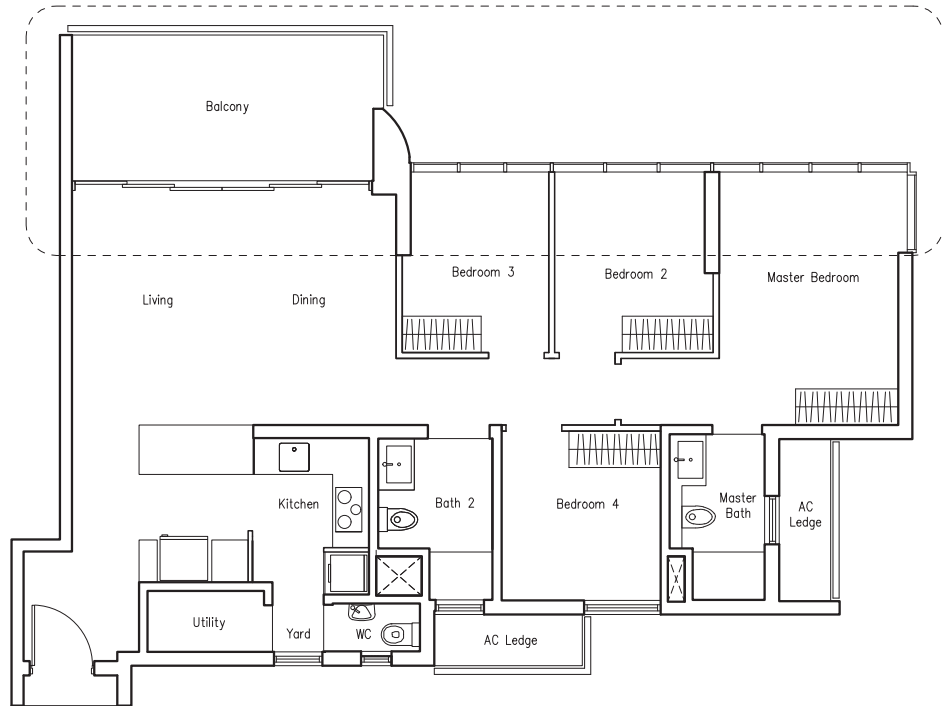
(including PES of 27 sq m/ 291 sq ft)

#01-37



# SUITES

## 4 BEDROOM



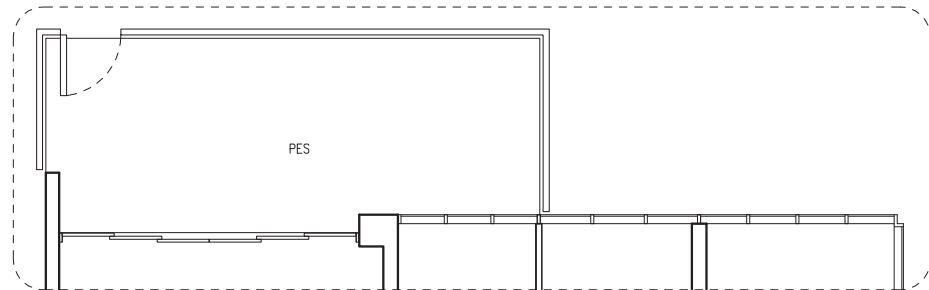
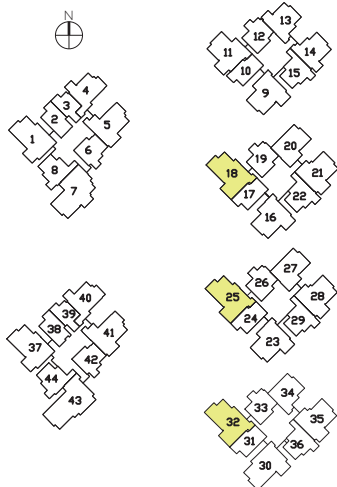
### TYPE D2

121 sq m | 1302 sq ft

#02-18 TO #15-18

#02-25 TO #15-25

#02-32 TO #15-32



### TYPE D2-P

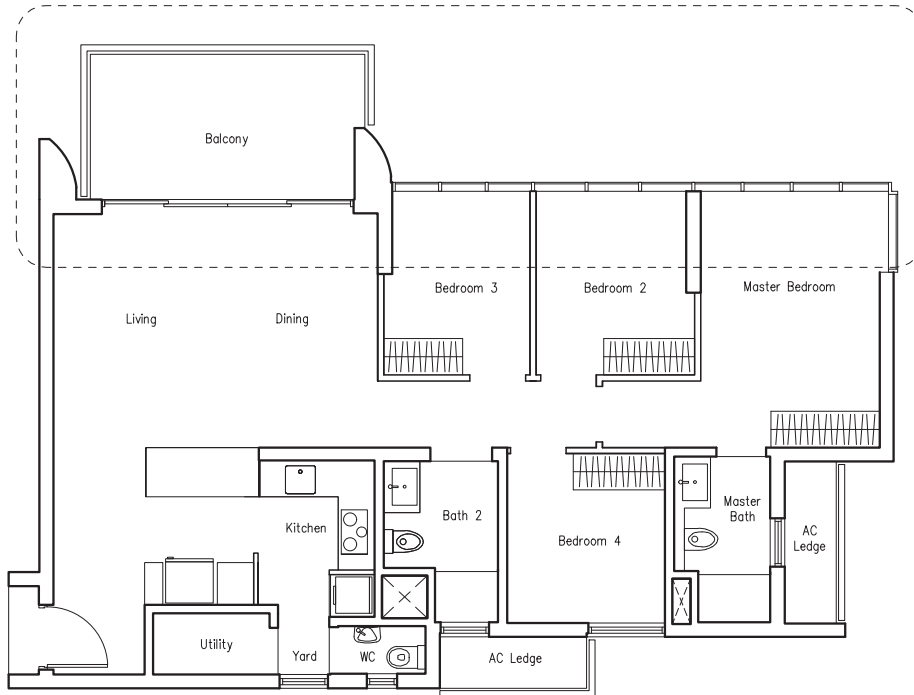
136 sq m | 1464 sq ft

(including PES of 29 sq m / 312 sq ft)

#01-18

#01-25

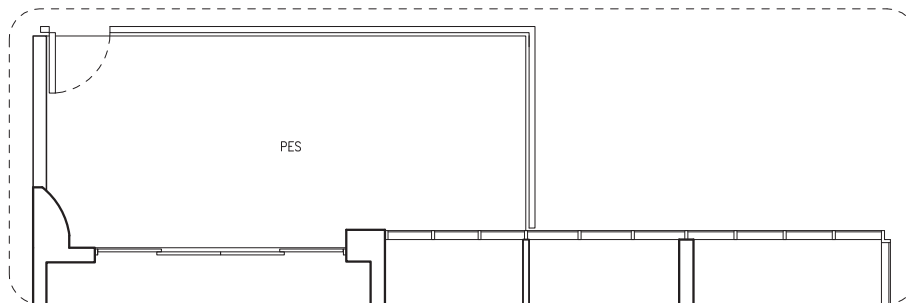
#01-32



### TYPE D3

119 sq m | 1281 sq ft

#02-30 TO #15-30

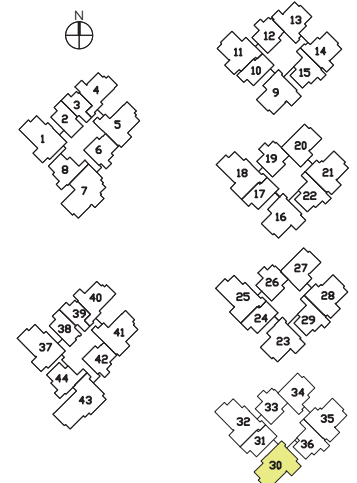


### TYPE D3-P

134 sq m | 1442 sq ft

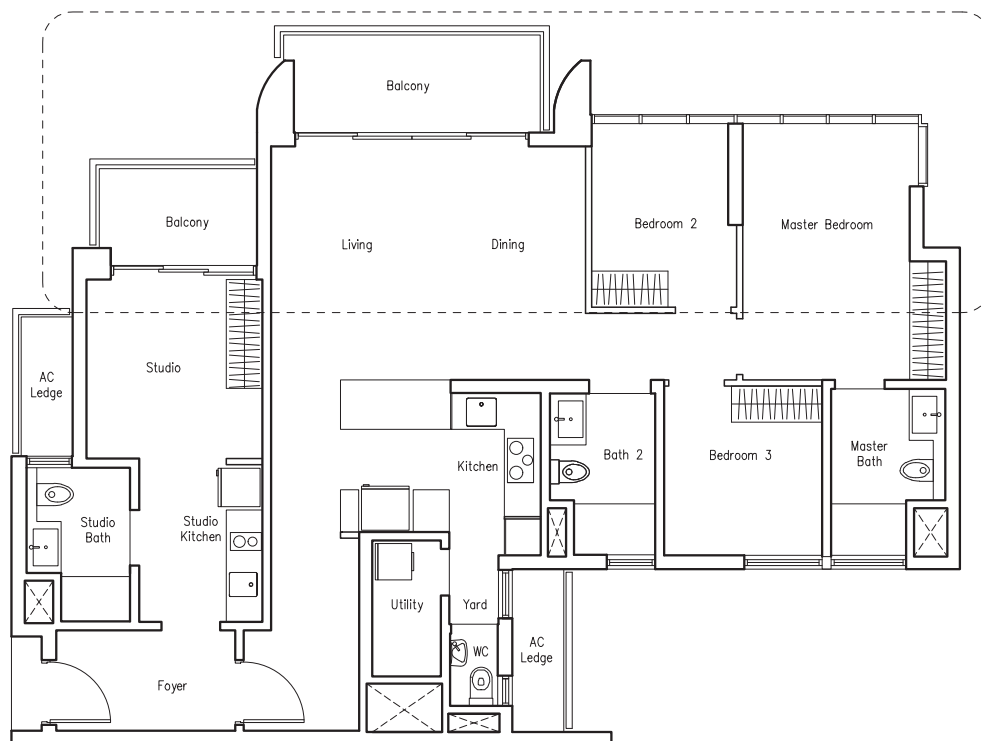
(including PES of 27 sq m / 291 sq ft)

#01-30



# SUITES

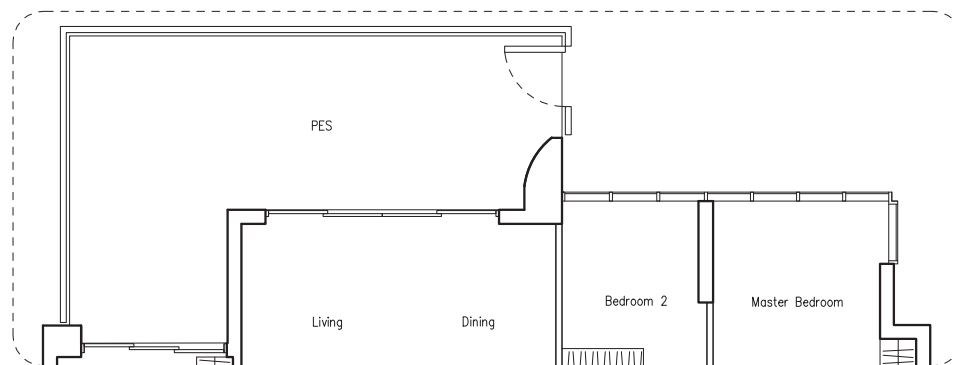
## 4 BEDROOM (DUAL-KEY)



### TYPE D4

137 sq m | 1475 sq ft

#02-07 TO #16-07

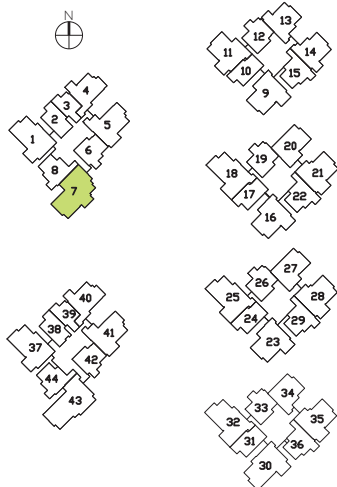


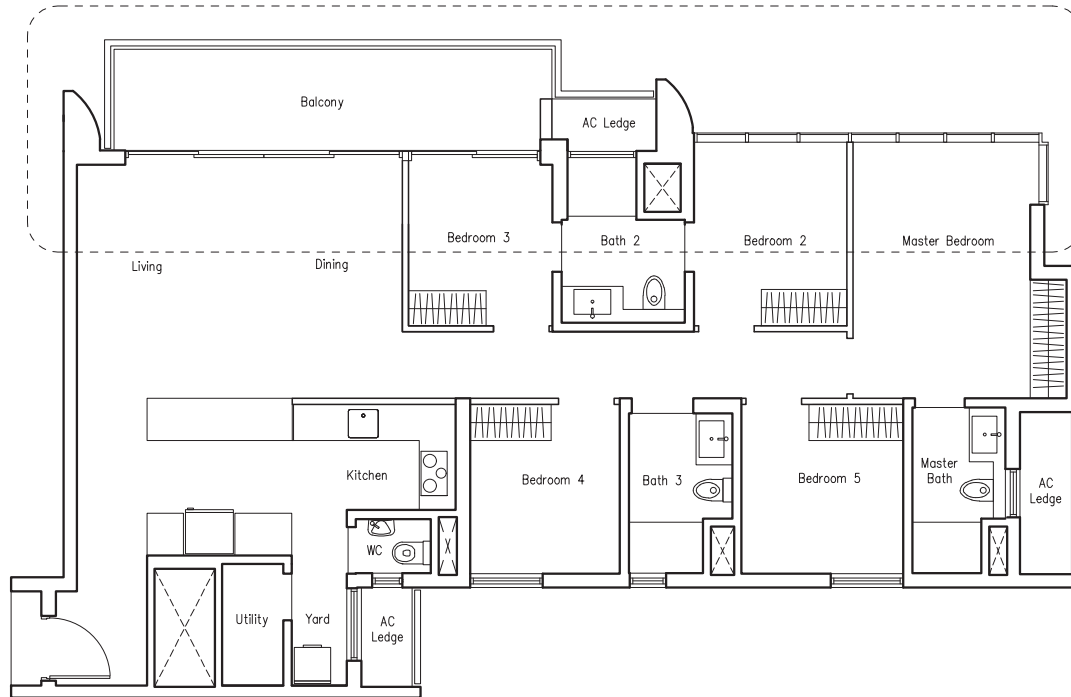
### TYPE D4-P

155 sq m | 1668 sq ft

(including PES of 31 sq m / 334 sq ft)

#01-07

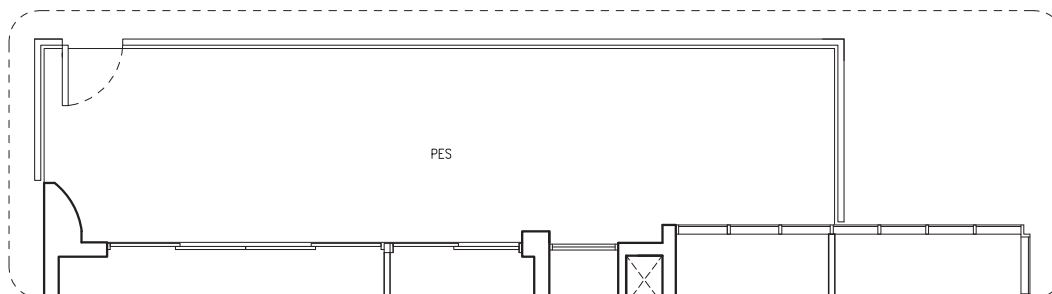




### TYPE EI

142 sq m | 1528 sq ft

#02-43 TO #15-43

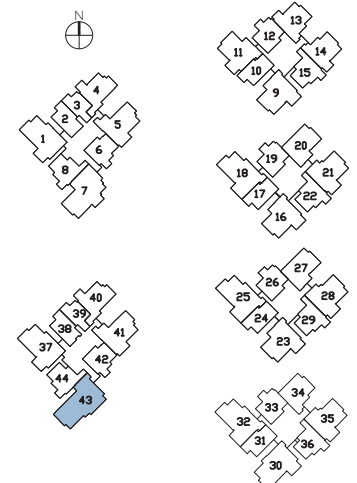


### TYPE EI-P

173 sq m | 1862 sq ft

(including PES of 47 sq m/ 506 sq ft)

#01-43



# PENTHOUSE

## 4 BEDROOM

Type PH1

184 sq m | 1981 sq ft

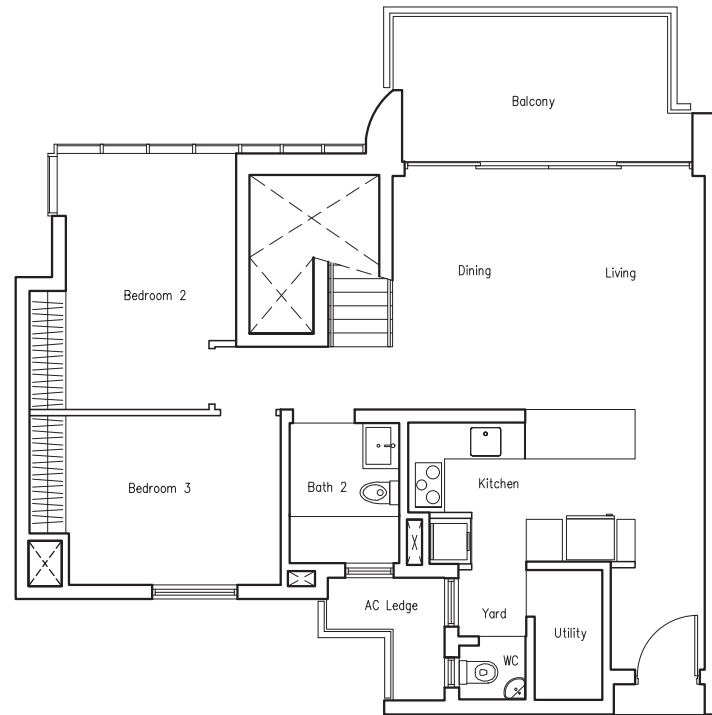
(including Roof Terrace of 17 sq m / 183 sq ft)

#16-21

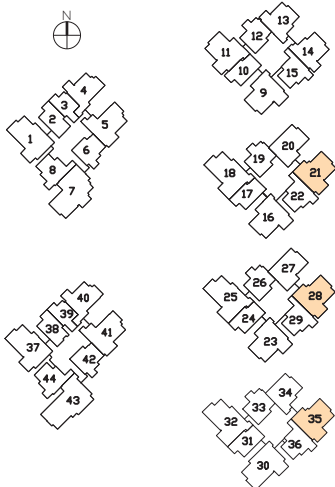
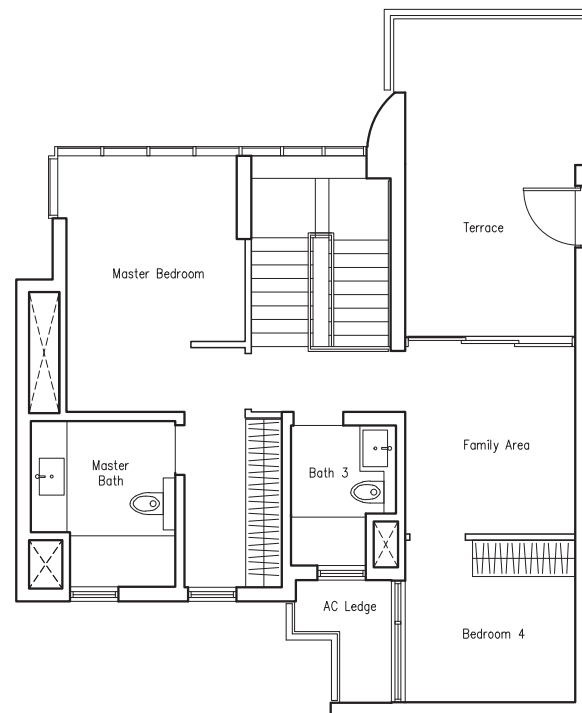
#16-28

#16-35

(Lower)



(Upper)



# PENTHOUSE

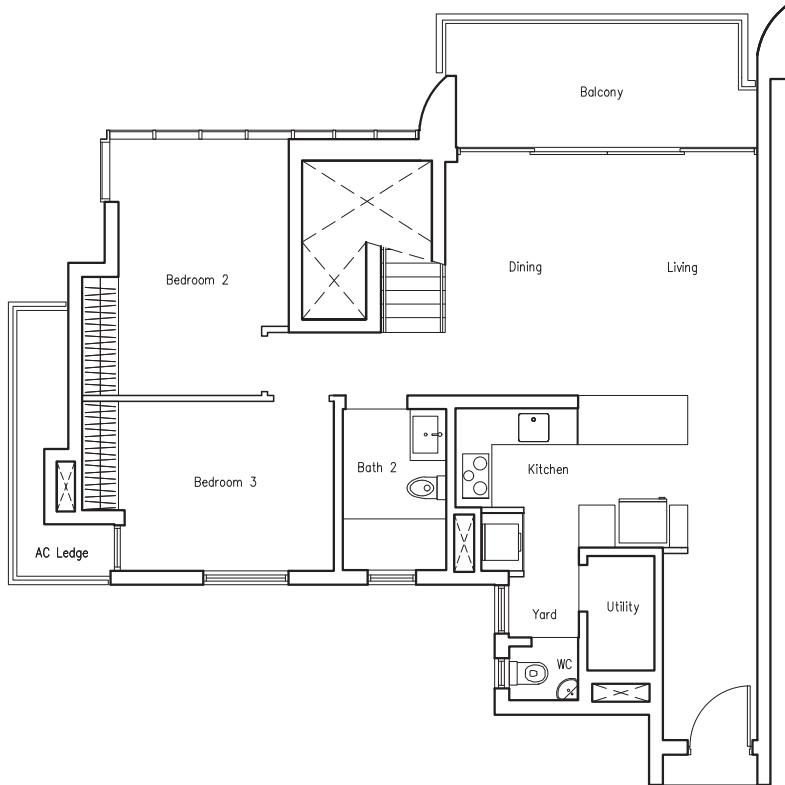
## 4 BEDROOM

Type PH2

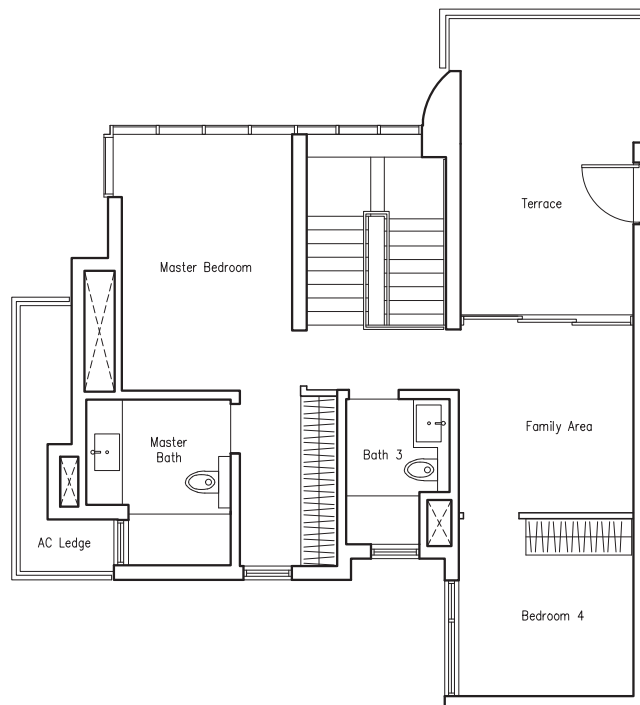
191 sq m | 2056 sq ft

(including Roof Terrace of 16 sq m/ 172 sq ft)

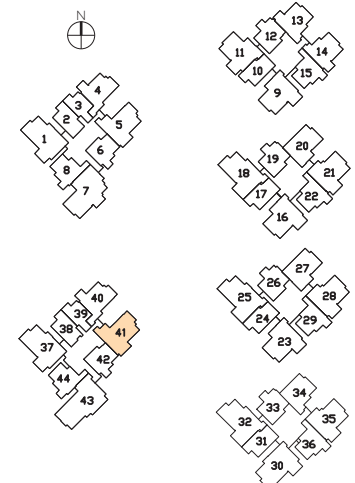
#16-41



(Lower)



(Upper)



# PENTHOUSE

## 4 BEDROOM + STUDY

Type PH3

211 sq m | 2271 sq ft

(including Roof Terrace of 21 sq m / 226 sq ft)

#16-18

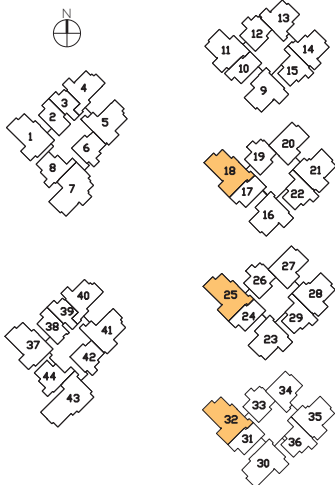
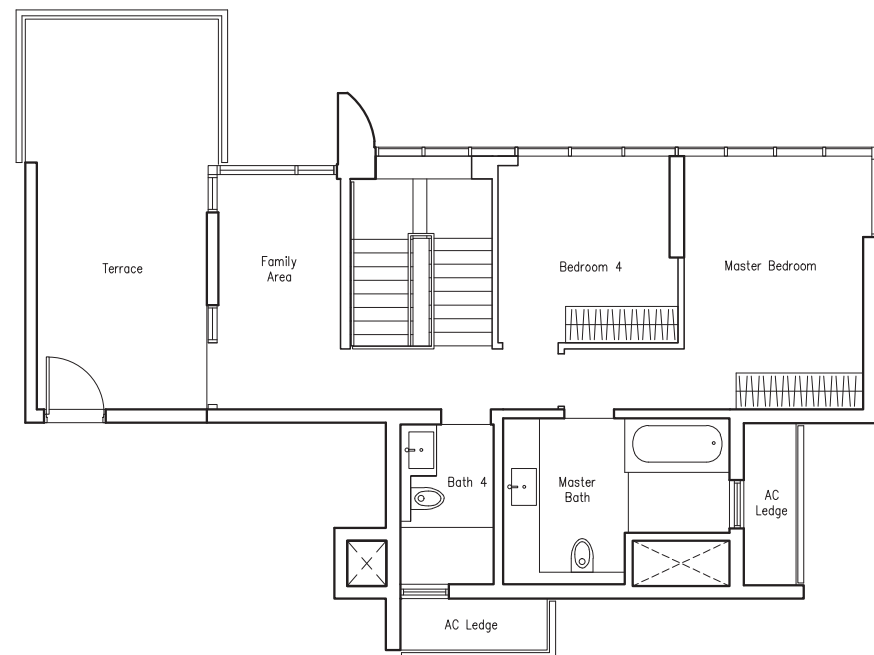
#16-25

#16-32

(Lower)



(Upper)





# PENTHOUSE

## 4 BEDROOM + STUDY

Type PH4

207 sq m | 2228 sq ft

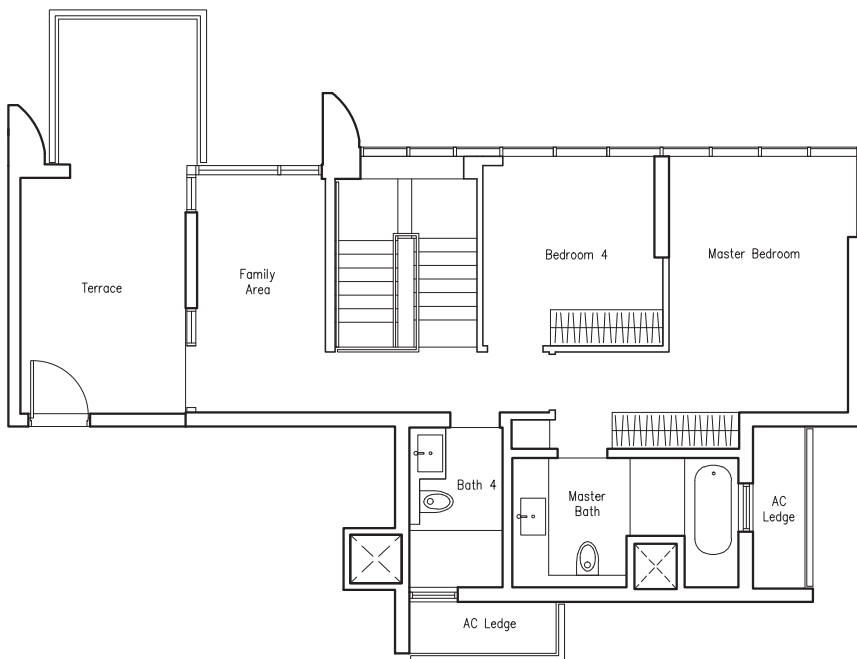
(including Roof Terrace of 19 sq m/ 205 sq ft)

#16-01

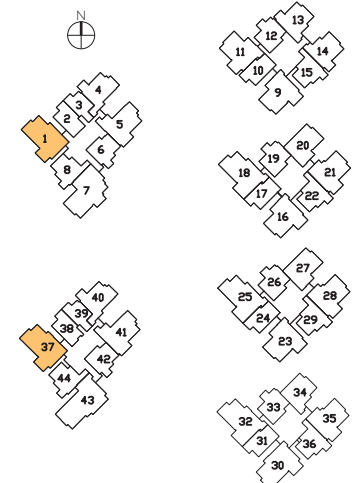
#16-37



(Lower)



(Upper)



# PENTHOUSE

## 4 BEDROOM + STUDY

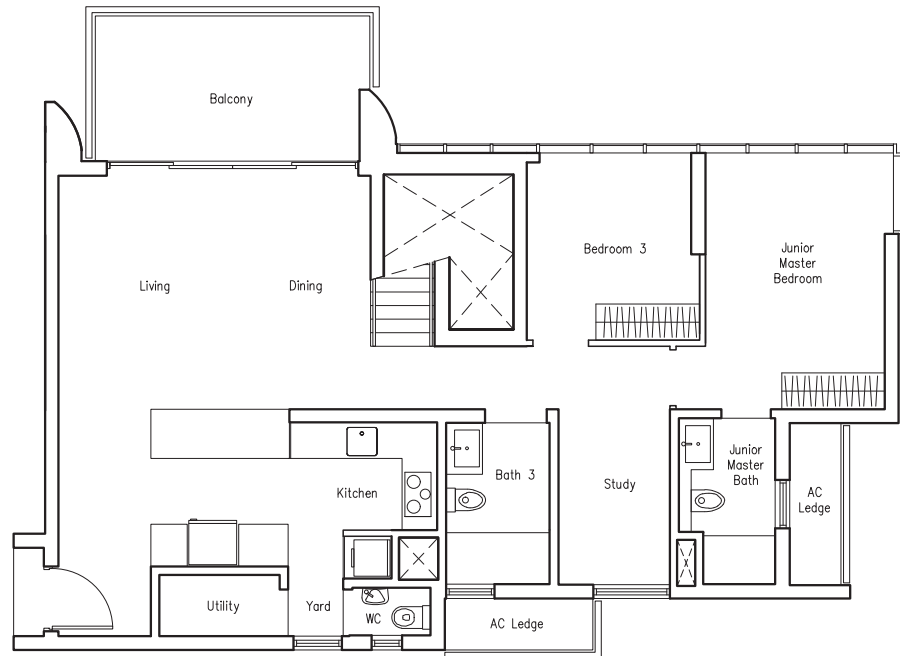
Type PH5

208 sq m | 2239 sq ft

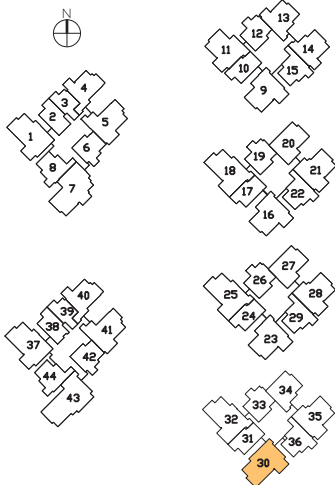
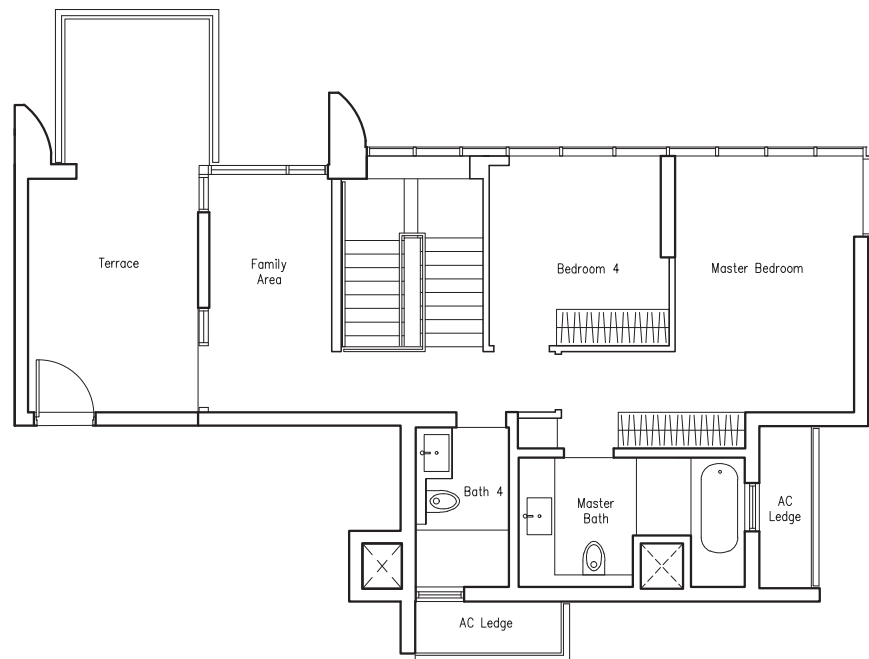
(including Roof Terrace of 19 sq m/ 205 sq ft)

#16-30

(Lower)



(Upper)

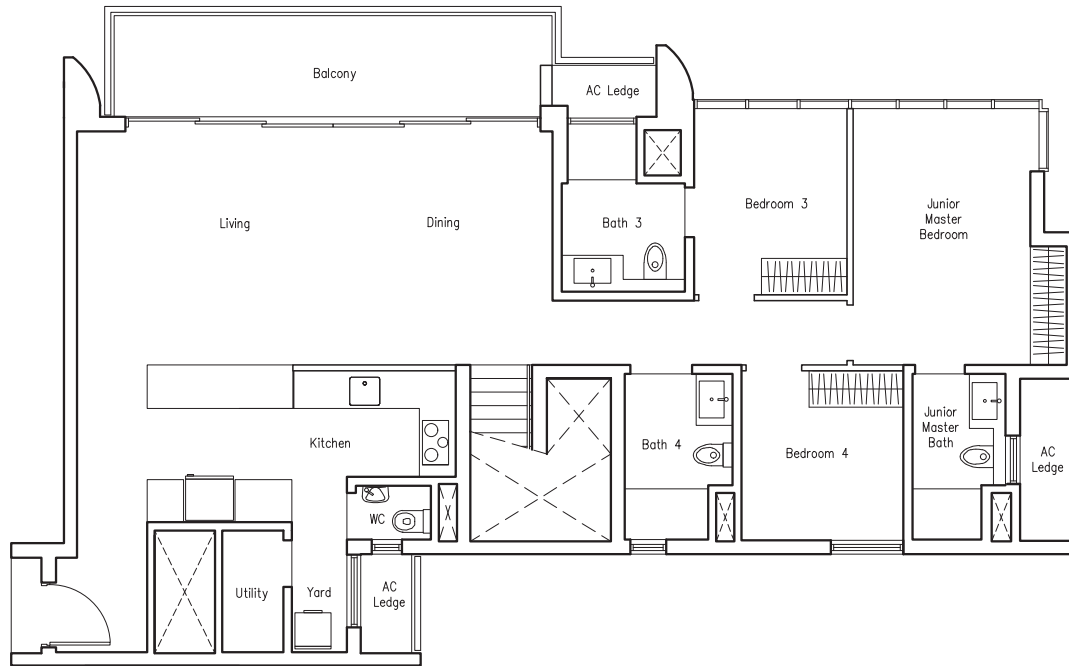


# PENTHOUSE

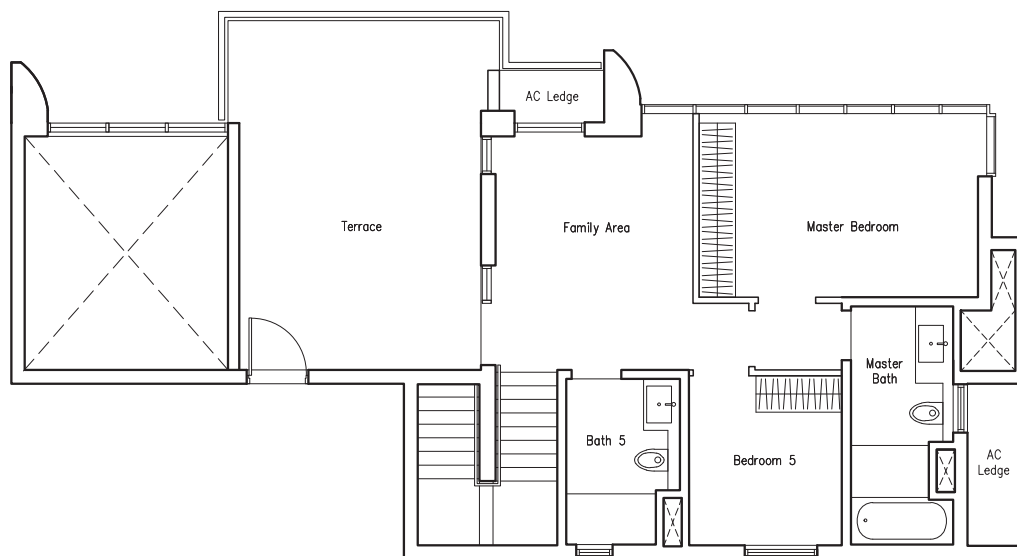
## 5 BEDROOM

Type PH6

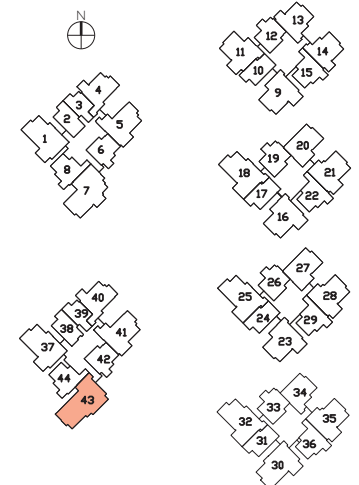
249 sq m | 2680 sq ft  
(including Roof Terrace of 26 sq m/ 280 sq ft)  
#16-43



(Lower)



(Upper)



# CORPORATE PROFILE

MCL Land is a leading property group with a long track record of building quality homes in Singapore and Malaysia over the past 40 years.

Their commitment to being a premier and reputable property developer inspires them to be equally dedicated to absolute customer satisfaction.

MCL Land holds an impressive portfolio of prime residential developments, including J Gateway, Palms @ Sixth Avenue, Hallmark Residences, Uber 388, Ripple Bay, Terrasse, Este Villa and The Estuary. LakeVille, their latest project, will be no different, and promises to deliver the same superb level of quality and excellence that are their hallmarks.



J Gateway



Palms @ Sixth Avenue



Hallmark Residences



Uber 388



Ripple Bay



Terrasse



Este Villa



The Estuary

# MCL Land

 A member of the Hongkong Land Group

78 Shenton Way #33-00 S(079120)

Tel no: (65) 6221-8111

#### DISCLAIMER:

While every reasonable care has been taken in preparing this brochure and in constructing the models and showflats, neither the Developer nor its agents will be held responsible for any inaccuracies or omissions. Visual representations, models, showflat displays and illustrations, photographs, art renderings and other graphic representations and references are intended to portray only artistic impressions of the development and décor and cannot be regarded as representations of fact. All areas and other measurements are approximate measurements and are subject to final survey. The property is subject to final inspection by the relevant authorities to comply with the current codes of practice.

All information, specifications, renderings, visual representations and plans are current at the time of publication and are subject to change as may be required by us and/or the relevant authorities. All statements are believed to be correct but shall not be regarded as statements or representations of fact. All plans and models are not to scale unless expressly stated and are subject to any amendments which are required or approved by the relevant authorities. The Sale and Purchase Agreement shall form the entire agreement between the Developer and the Purchaser and shall supersede all statements, representations or promises made prior to the signing of the Sale and Purchase Agreement and shall in no way be modified by any statements, representations or promises made by us or our agents, which are not embodied in the Sale and Purchase Agreement.

Developer: MCL Land (Prestige) Pte Ltd (ROC: 201217147E) • Developer Licence: CI115 • Location: Lot(s) 4617T MK 06 at Jurong West Street 41 • Land Tenure: 99 years commencing from 30 April 2013 • Building Plan No: A1252-00498-2013-BP01 dated 27 Jan 2014 • Expected Date of Vacant Possession: 30 Jan 2018 • Expected Date of Legal Completion: 30 Jan 2021

